

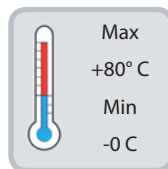
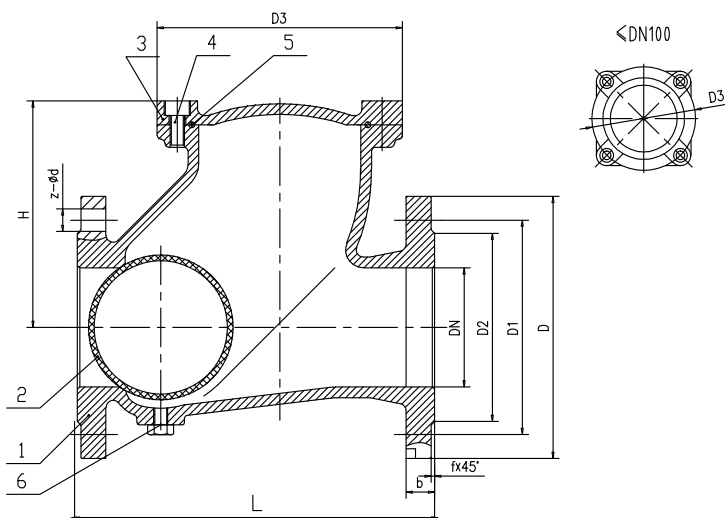
Valvola di ritegno a palla - flangiata PN 16

Ball check valve - flanged PN 16

Federrückschlagventil - angeflanscht PN 16

Vanne de retenue à ressort - bride PN 16

ОБРАТНЫЙ КЛАПАН ШАРОВОЙ – ФЛАНЦЕВЫЙ PN 16



IVR 284	CARATTERISTICHE FEATURES
Pressione esercizio Working pressure	PN 16
Temperatura esercizio Design temperature	0°C / +80°C
Norma progetto Design standard	EN 12334
Scartamento Face to face	EN 558 Series 48
Flange Flanges	EN1092-2
Collaudi Tests	EN12266-1
Rivestimento Coating	Polvere epossidica RAL 5017, spessore 200-250 µm Epoxy powder RAL 5017, thickness 200-250 µm

ITEM	COMPONENTI PART NAME	MATERIALI MATERIALS
1	Corpo Body	Ghisa sferoidale GGG 40 Ductile iron GGG 40
2	Palla Ball	Acciaio al carbonio A3 rivestita in NBR Carbon steel A3 NBR coated
3	Coperchio Bonnet	Ghisa sferoidale GGG 40 Ductile iron GGG 40
4	Vite Hexagon socket screws	Acciaio al carbonio A3 Carbon steel A3
5	Guarnizione Gasket	NBR
6	Ispezione Plug	Acciaio al carbonio A3 Carbon steel A3

SIZE		L	D3	H	f	PN 10					PN 16					W (Kg)
DN	IN					D	D1	D2	b	Z - Ød	D	D1	D2	b	Z - Ød	
40	1" 1/2	180	88	80	3	150	110	88	18	4 - 18	150	110	88	18	4 - 18	7,5
50	2"	200	98	106	3	165	125	102	20	4 - 18	165	125	102	20	4 - 18	8,9
65	2" 1/2	240	114	129	3	185	145	122	20	4 - 18	185	145	122	20	4 - 18	13,5
80	3"	260	140	146	3	200	160	138	20	8 - 18	200	160	138	22	8 - 18	16,3
100	4"	300	172	194	3	220	180	158	24	8 - 18	220	180	158	24	8 - 18	24,1
125	5"	350	238	207	3	250	210	188	26	8 - 18	250	210	188	26	8 - 18	48,6
150	6"	400	270	240	3	285	240	212	26	8 - 23	285	240	212	26	8 - 23	58,2
200	8"	500	340	322	3	340	295	268	26	8 - 23	340	295	268	26	12 - 23	100,3
250	10"	600	412	399	3	395	350	320	28	12 - 23	405	355	320	28	12 - 27	143,8
300	12"	700	462	464	4	445	400	370	28	12 - 23	460	410	378	28	12 - 27	208,6