

## LINEA SOLLEVAMENTO INOXENERGY LS CE

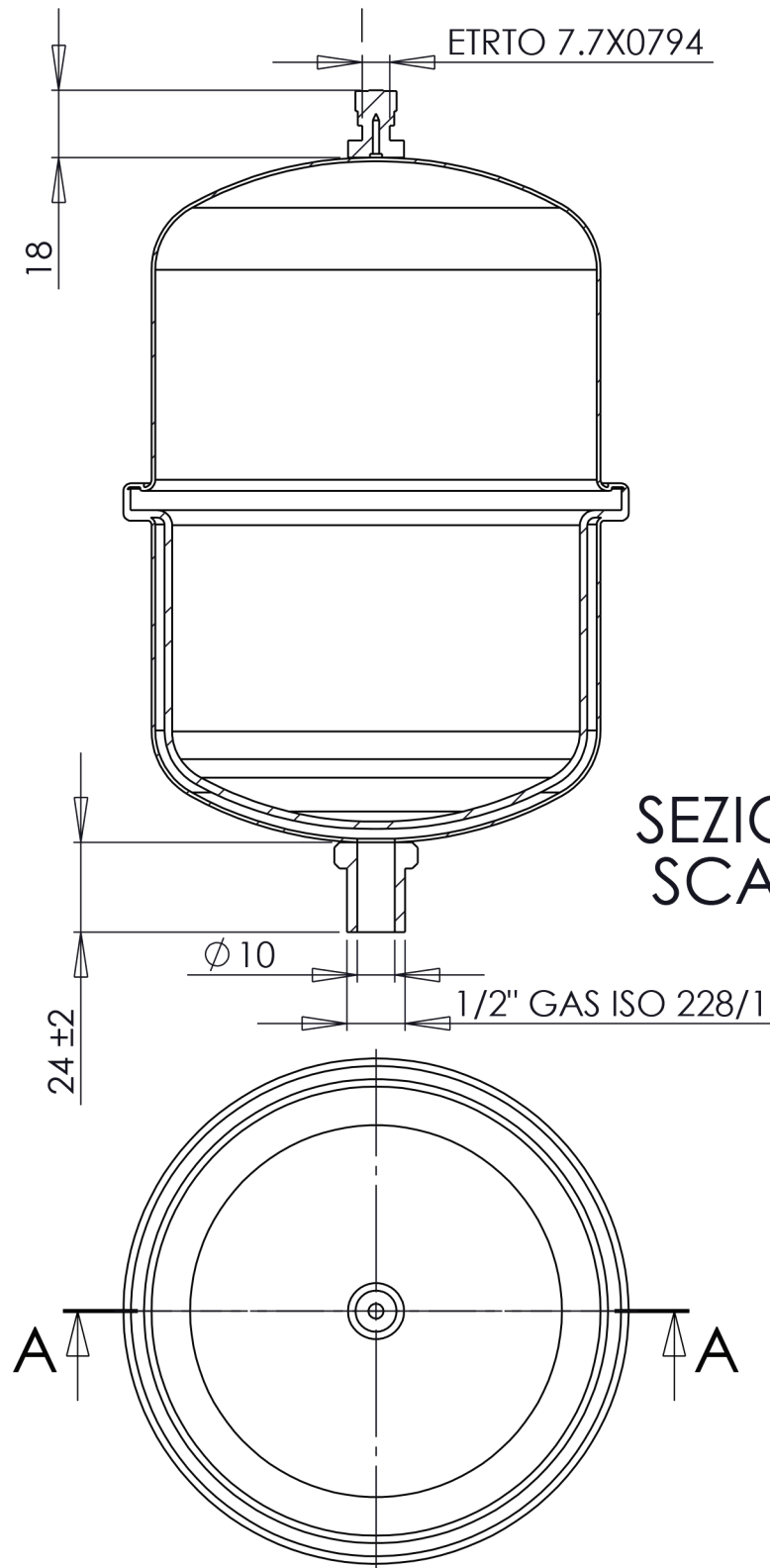
### VASI DI ESPANSIONE IN ACCIAIO INOX STAINLESS STEEL WATER TANKS

Modello/Model:	0228177	
<b>Caratteristiche tecniche - technical features</b>		
Volume Volume		1 L
raccordo connector		1/2" GAS (ISO 228/1)
temperatura esercizio working temperature	TS	-10 +99 °C
pressione max. Max pressure	PS	8 bar
pressione prova test pressure	PT	12 bar
precarica precharged pressure		2 bar (range 0,5-3,5 bar)
Fluido Fluid		Aria+acqua Air+water
Modulo: Module:		-
Categoria PED PED Category:		Exempt (Directive PED 2014/68/EU Art4.3 )

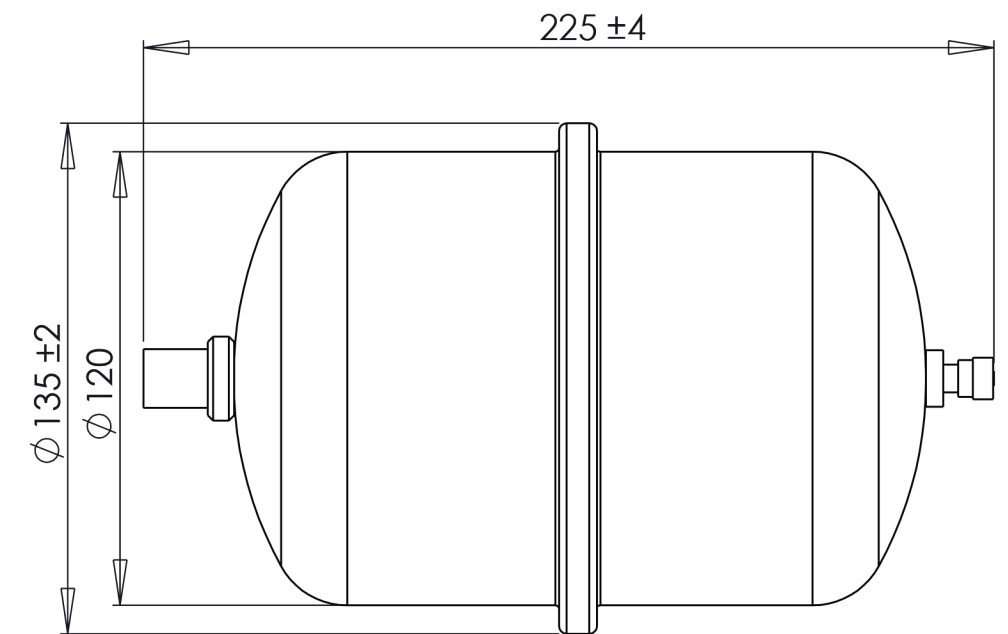
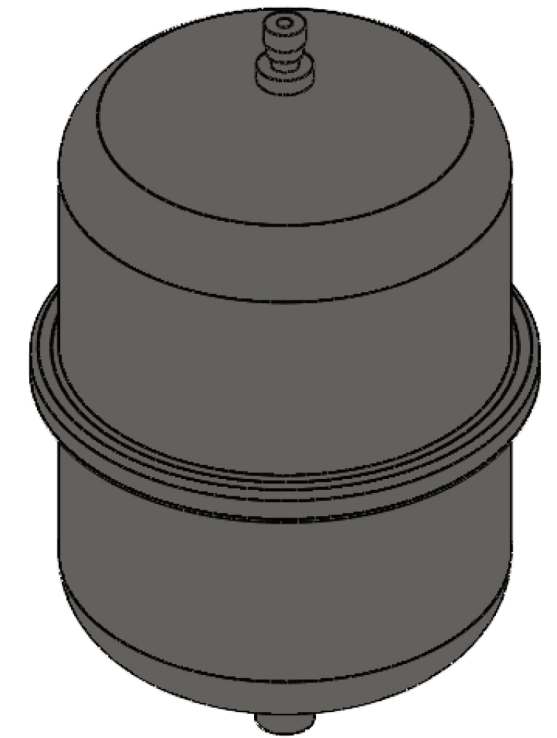
Energy Expert by Idroexpert  
Via dell'Industria 15 - 48015 Montaletto di Cervia (RA)  
Tel. 0544 964311 - Fax 0544 267811 - info@divisionenergy.com - www.divisionenergy.com

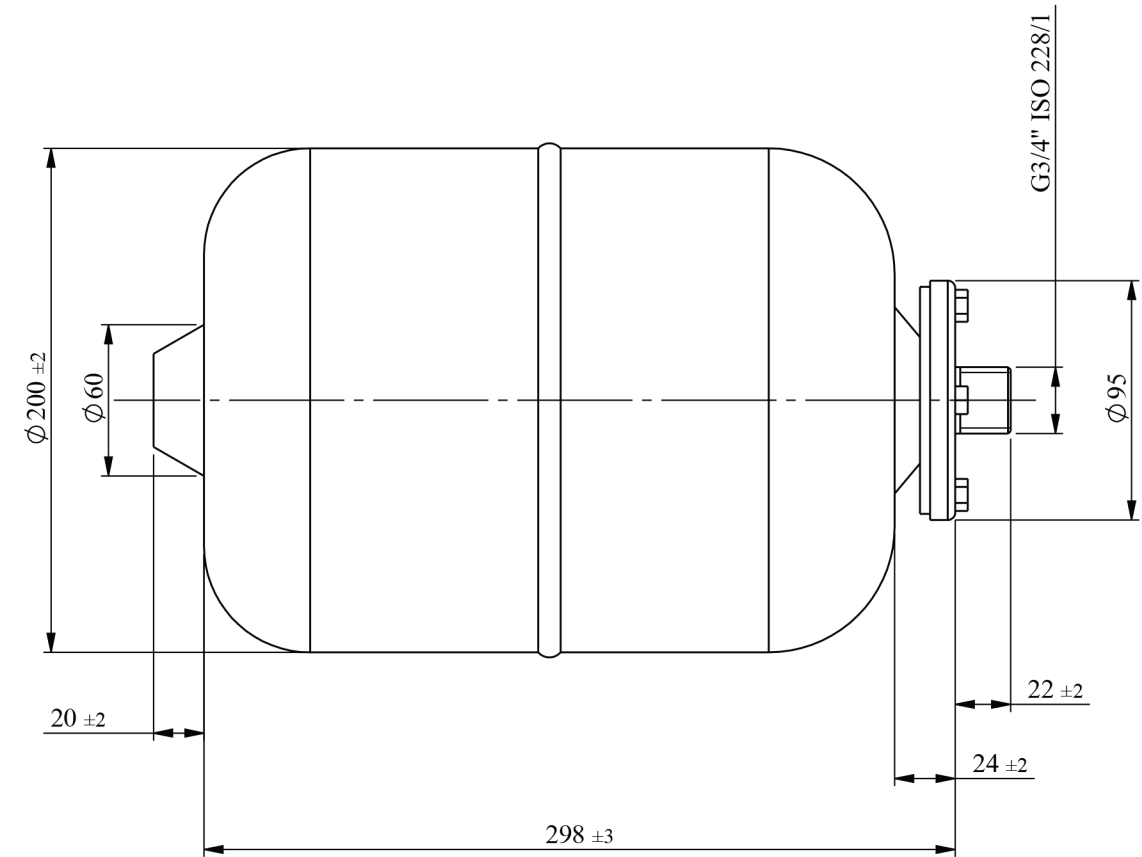
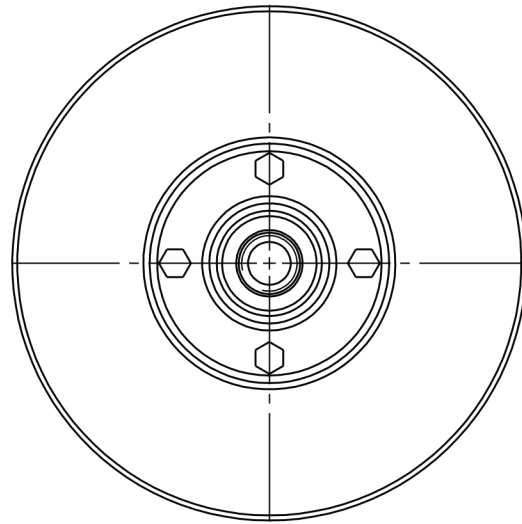
## LINEA SOLLEVAMENTO INOXENERGY LS CE

VASI DI ESPANSIONE IN ACCIAIO INOX STAINLESS STEEL WATER TANKS		
Modello/Model:	<b>0228178</b>	
<b>Caratteristiche tecniche - technical features</b>		
Volume Volume		2 L
raccordo connector		1/2" GAS (ISO 228/1)
temperatura esercizio working temperature	TS	-10 +99 °C
pressione max. Max pressure	PS	8 bar
pressione prova test pressure	PT	12 bar
precarica precharged pressure		2 bar (range 0,5-3,5 bar)
Fluido Fluid		Aria+acqua Air+water
Modulo: Module:		-
Categoria PED PED Category:		Exempt (Directive PED 2014/68/EU Art4.3 )



SEZIONE A-A  
SCALA 1 : 2





**LINEA SOLLEVAMENTO  
INOXENERGY LS CE**



**VASI DI ESPANSIONE IN ACCIAIO INOX  
STAINLESS STEEL WATER TANKS**

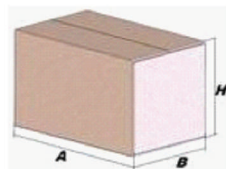
Modello/Model: **0228179**

**Caratteristiche tecniche - technical features**

Volume Volume		<b>8 L</b>
raccordo connector		<b>3/4" GAS (ISO 228/1)</b>
temperatura esercizio working temperature	<b>TS</b>	<b>-10 +99 °C</b>
pressione max. Max pressure	<b>PS</b>	<b>8 bar</b>
pressione prova test pressure	<b>PT</b>	<b>12 bar</b>
precarica precharged pressure		<b>2 bar (range 0,5-3,5 bar)</b>
Fluido Fluid		<b>Aria+acqua Air+water</b>
Modulo: Module:		<b>A</b>
Categoria PED PED Category:		<b>I</b>

**Imballo - packaging**

	<b>A</b>	<b>B</b>	<b>H</b>
dimensioni (mm) dimensions (mm)	350	200	200
volume (m <sup>3</sup> ) volume (m <sup>3</sup> )	0,01		
peso (kg) weight (kg)	1,2		
q.ta per cartone q.ty for box	1		



**Energy Expert by Idroexpert**  
**Via dell'Industria 15 - 48015 Montaletto di Cervia (RA)**  
**Tel. 0544 964311 - Fax 0544 267811 - info@divisionenergy.com - www.divisionenergy.com**

VASI DI ESPANSIONE IN ACCIAIO INOX  
STAINLESS STEEL WATER TANKS

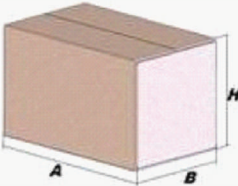
Modello/Model: **0228180**

**Caratteristiche tecniche - technical features**




Volume Volume		20 L
raccordo connector		1" GAS (ISO 228/1)
temperatura esercizio working temperature	TS	-10 +99 °C
pressione max. Max pressure	PS	8 bar
pressione prova test pressure	PT	12 bar
precarica precharged pressure		2 bar (range 0,5-3,5 bar)
Fluido Fluid		Aria+acqua Air+water
Modulo: Module:		A
Categoria PED PED Category:		I

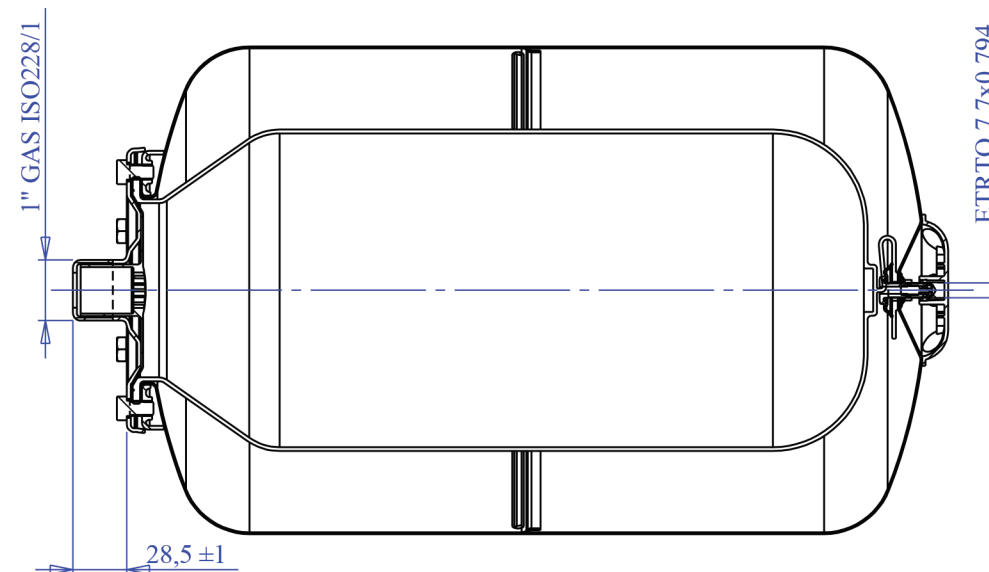
**Imballo - packaging**

	A	B	H
dimensioni (mm) dimensions (mm)	515	275	278
volume (m <sup>3</sup> ) volume (m <sup>3</sup> )	0,04		
peso (kg) weight (kg)	4,9		
q.ta per cartone q.ty for box	1		
quantità per paletta Q,y for std. pallet	56		

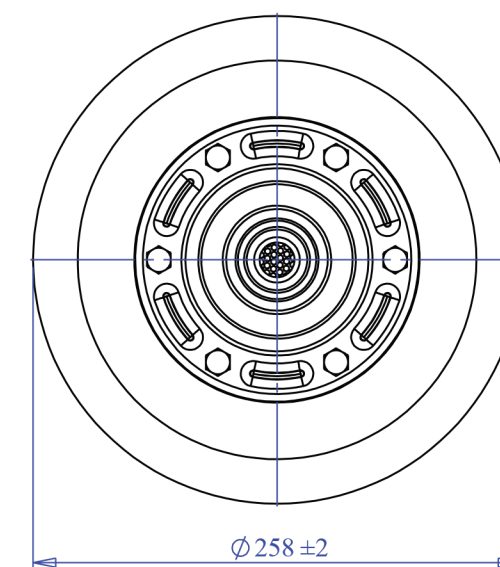
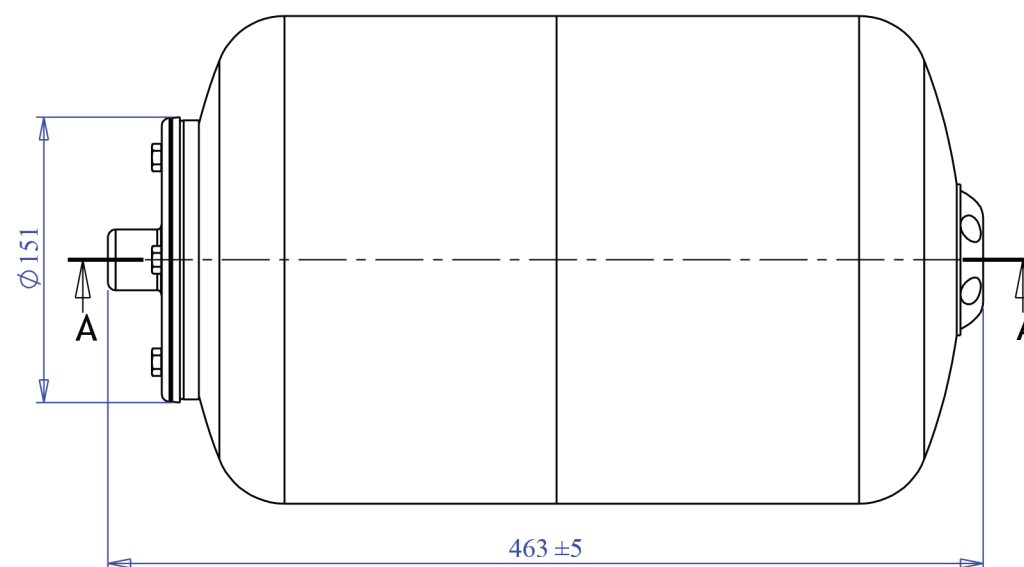


**Parti di ricambio - Spare parts**

	codice item	materiale material	potabilità potable	trattamento treatment	immagine image
Membrana Membrane	<b>0076795</b>	GOMMA PER ACQUA USO ALIMENTARE / RUBBER FOR POTABLE WATER	X		
Controflangia Coverflange	SPCFL191S43000 00	ACCIAIO INOX AISI304 / STAINLESS STEEL AISI304	X		
Valvola precarica Precharge valve	ACVALH27PR000 000	OTTONE / BRASS			



SEZIONE A-A



## SOLLEVAMENTO ACQUA - ACQUA CALDA WATER BOOSTER SYSTEMS - DOMESTIC HOT WATER

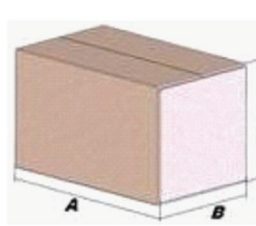
Modello/Model: **0228181**

### Caratteristiche tecniche - technical features




Volume Volume		<b>50 L</b>
raccordo connector		<b>1" GAS (ISO 228/1)</b>
temperatura esercizio working temperature	<b>TS</b>	<b>-10 +99 °C</b>
pressione max. Max pressure	<b>PS</b>	<b>8 bar</b>
pressione prova test pressure	<b>PT</b>	<b>12 bar</b>
precarica precharged pressure		<b>2 bar (range 0,5-3,5 bar)</b>
Fluido Fluid		<b>Aria+acqua Air+water</b>
Modulo: Module:		<b>D1</b>
Categoria PED PED Category:		<b>II</b>

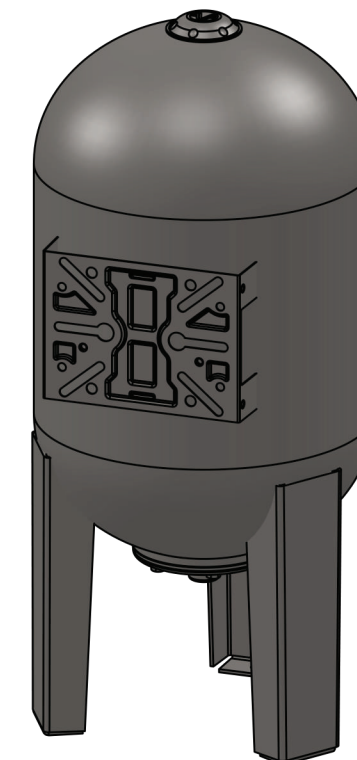
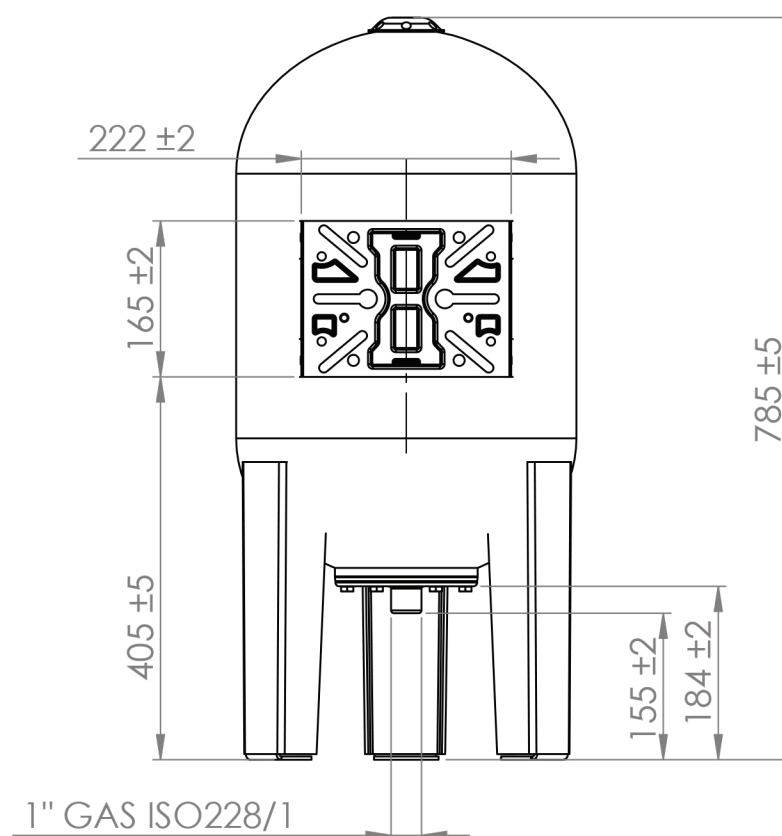
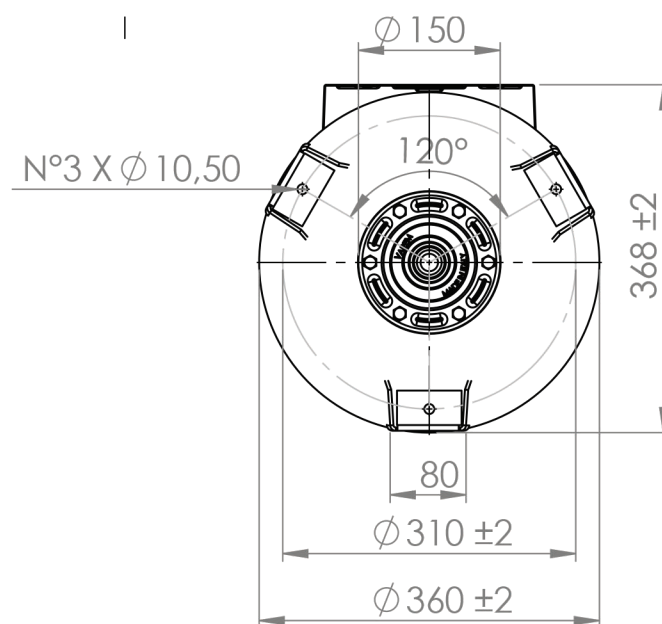
### Imballo - packaging

	<b>A</b>	<b>B</b>	<b>H</b>
dimensioni (mm) dimensions (mm)	<b>800</b>	<b>380</b>	<b>380</b>
volume (m <sup>3</sup> ) volume (m <sup>3</sup> )	<b>0,12</b>		
peso (kg) weight (kg)	<b>18,0</b>		
q.ta per cartone q.ty for box	<b>1</b>		



### Parti di ricambio - Spare parts



	codice item	materiale material	potabilità potable	trattamento treatment	immagine image
Membrana Membrane	<b>0517866</b>	GOMMA PER ACQUA USO ALIMENTARE / RUBBER FOR POTABLE WATER	X		
Controflangia Coverflange	SPCFL191S43000 00	ACCIAIO INOX / STAINLESS STEEL	X		
Valvola precarica Precharge valve	ACVALJOVL000 0000	OTTONE / BRASS			

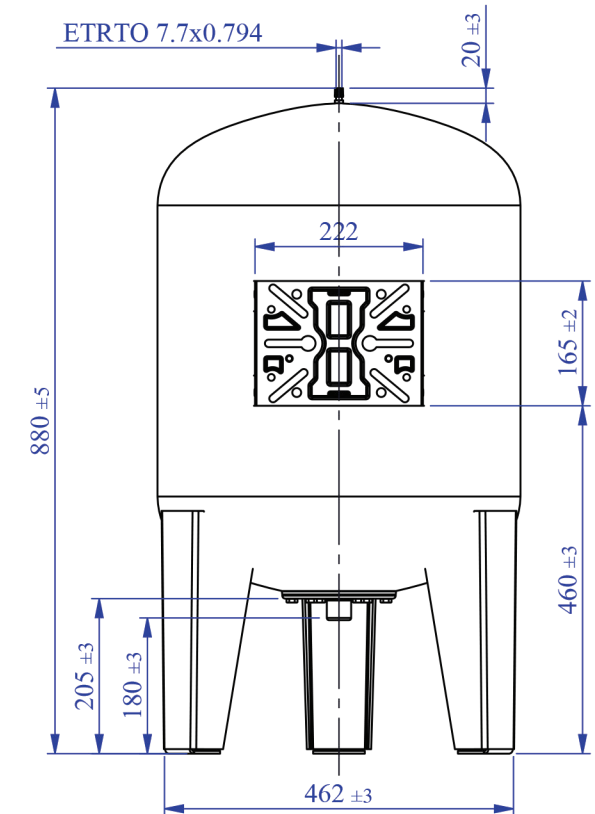
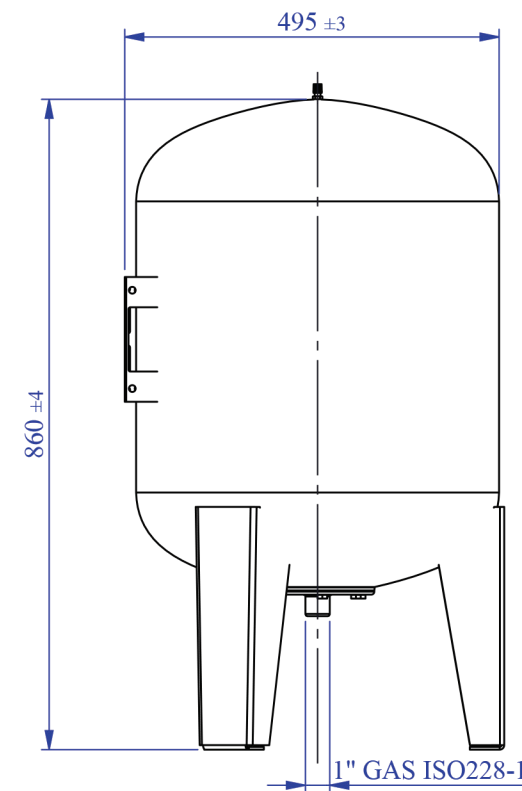
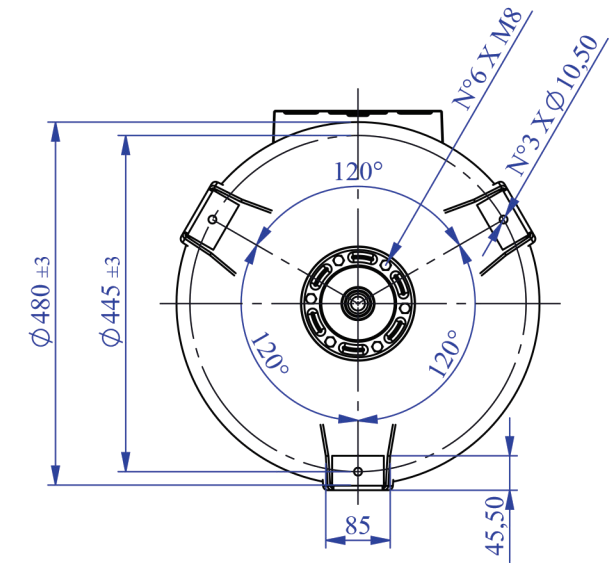
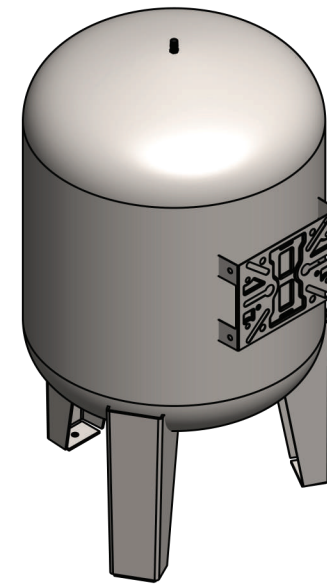


Energy Expert by Idroexpert

Via dell'Industria 15 - 48015 Montaletto di Cervia (RA)

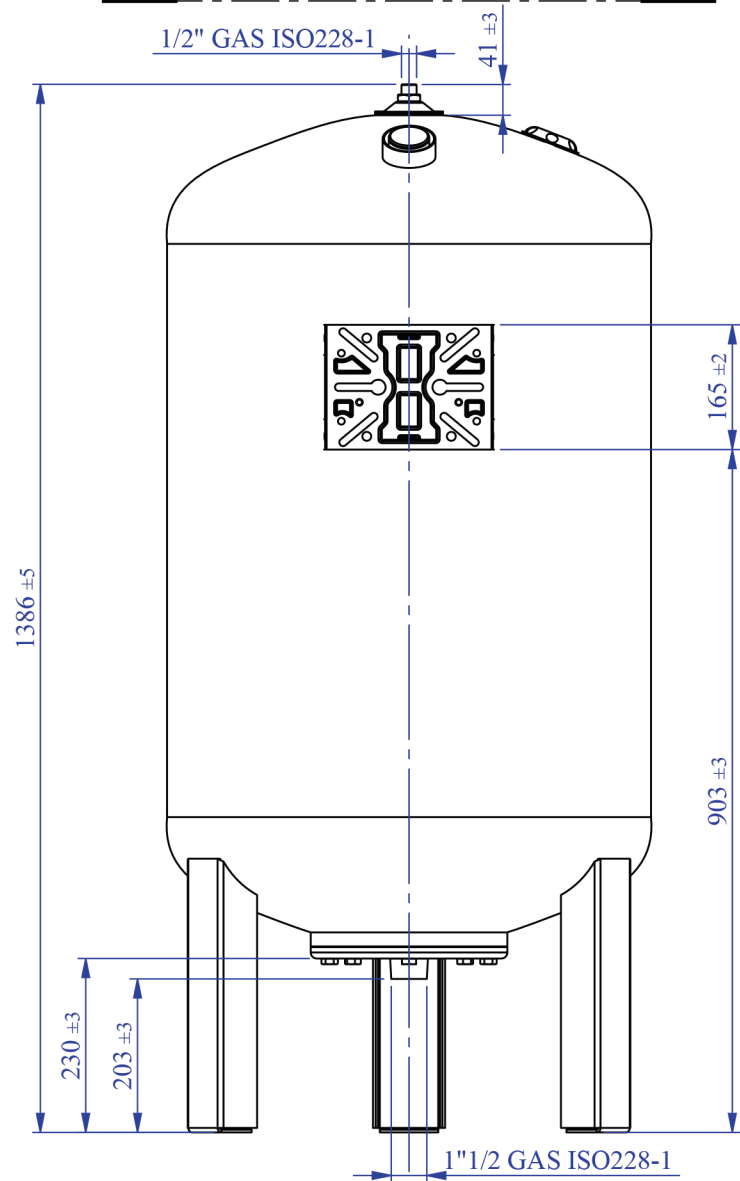
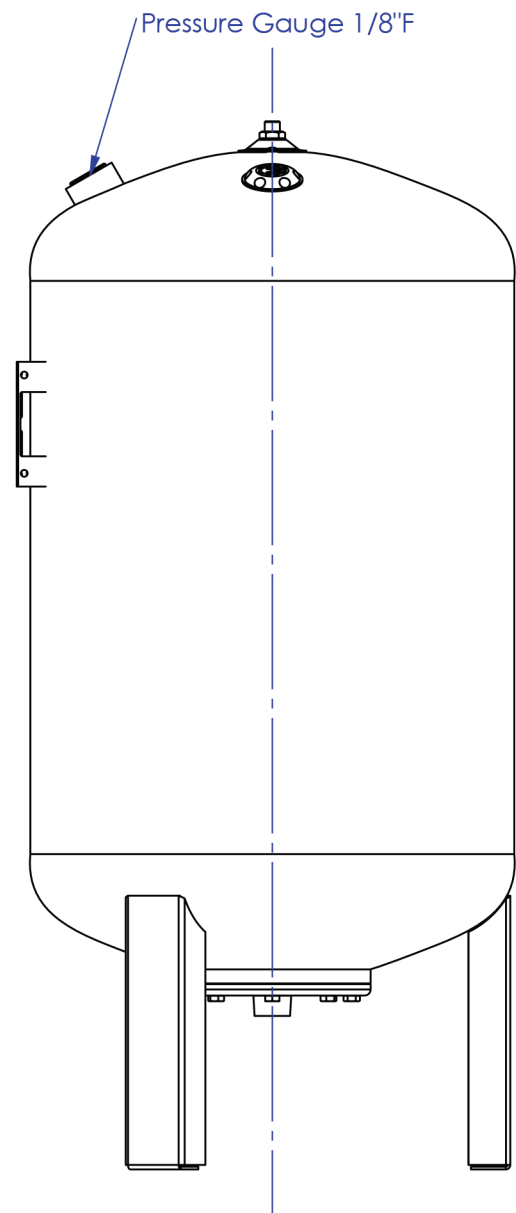
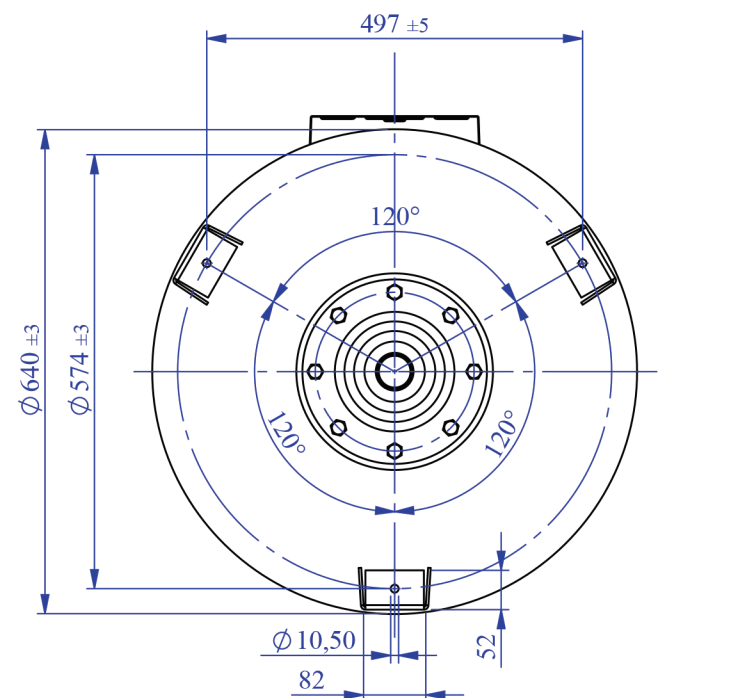
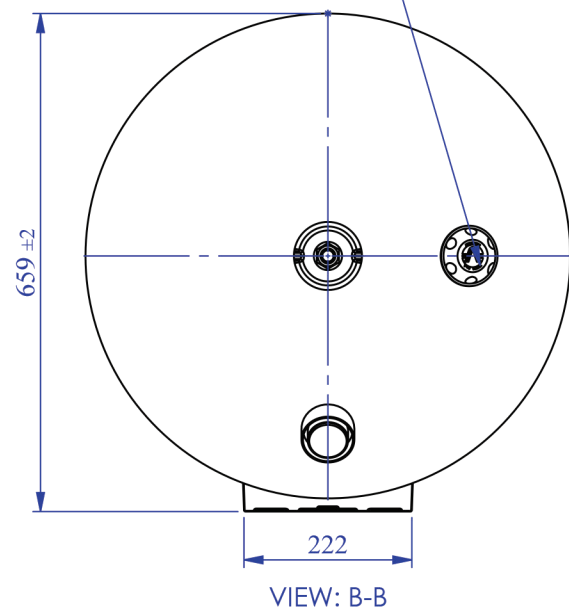
Tel. 0544 964311 - Fax 0544 267811 - info@divisionenergy.com - www.divisionenergy.com

SOLLEVAMENTO ACQUA - ACQUA CALDA WATER BOOSTER SYSTEMS - DOMESTIC HOT WATER					
Modello/Model:		0228182			
Caratteristiche tecniche - technical features					
Volume Volume		100 L			
raccordo connector		1" GAS (ISO 228/1)			
temperatura esercizio working temperature	TS	-10 +99 °C			
pressione max. Max pressure	PS	8 bar			
pressione prova test pressure	PT	12 bar			
precarica precharged pressure		2 bar (range 0,5-3,5 bar)			
Fluido Fluid		Aria+acqua Air+water			
Modulo Module:		D1			
Categoria PED PED Category:		II			
Imballo - packaging					
	A	B	H		
dimensioni (mm) dimensions (mm)	900	500	500		
volume (m <sup>3</sup> ) volume (m <sup>3</sup> )	0,23				
peso (kg) weight (kg)	18,0				
q.ta per cartone q.ty for box	1				
Parti di ricambio - Spare parts					
	codice item	materiale material	potabilità potable	trattamento treatment	immagine image
Membrana Membrane	0517867	GOMMA PER ACQUA USO ALIMENTARE / RUBBER FOR POTABLE WATER	X		
Controflangia Coverflange	SPCFL191S43000 00	ACCIAIO INOX AISI304 / STAINLESS STEEL AISI304	X		
Valvola precarica Precharge valve	ACVALJOVSH000 000	OTTONE / BRASS			





Air precharge valve ETRTO 7.7x0.794



## LINEA SOLLEVAMENTO INOXENERGY LS CE



### VASI DI ESPANSIONE IN ACCIAIO INOX STAINLESS STEEL WATER TANKS

Modello/Model: 0228184

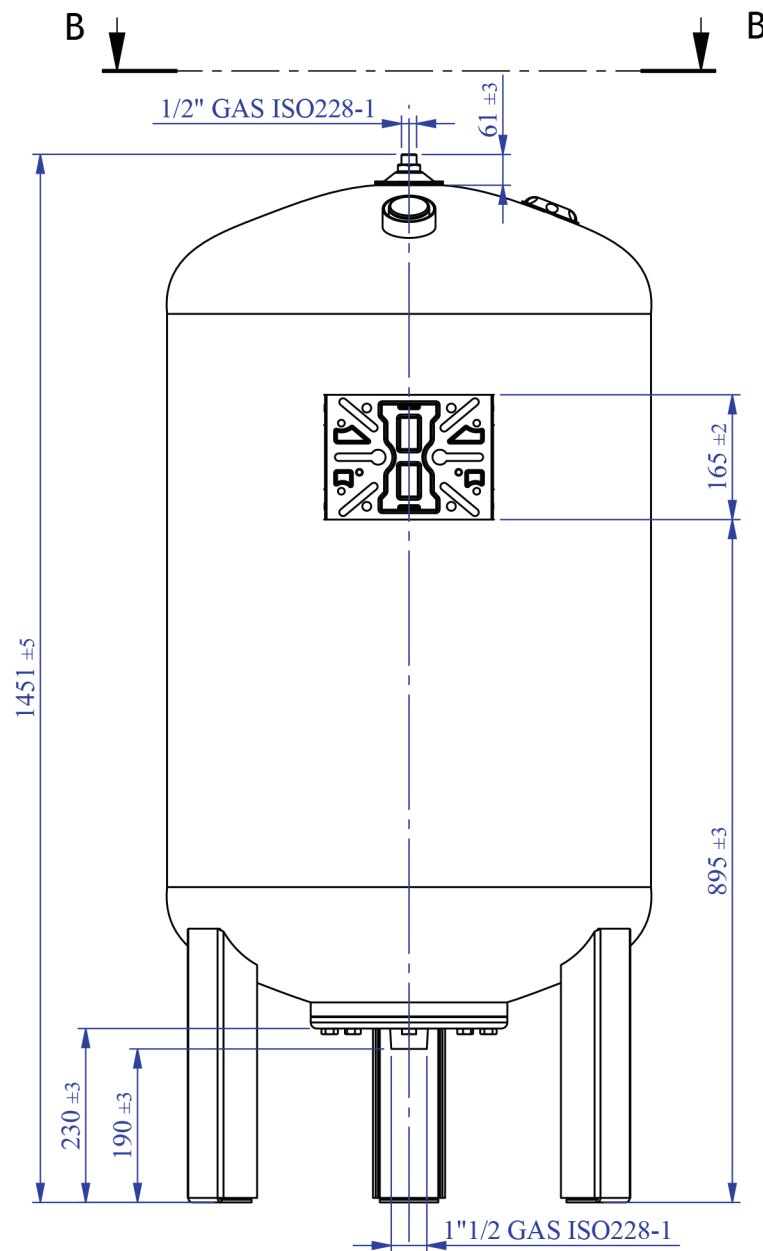
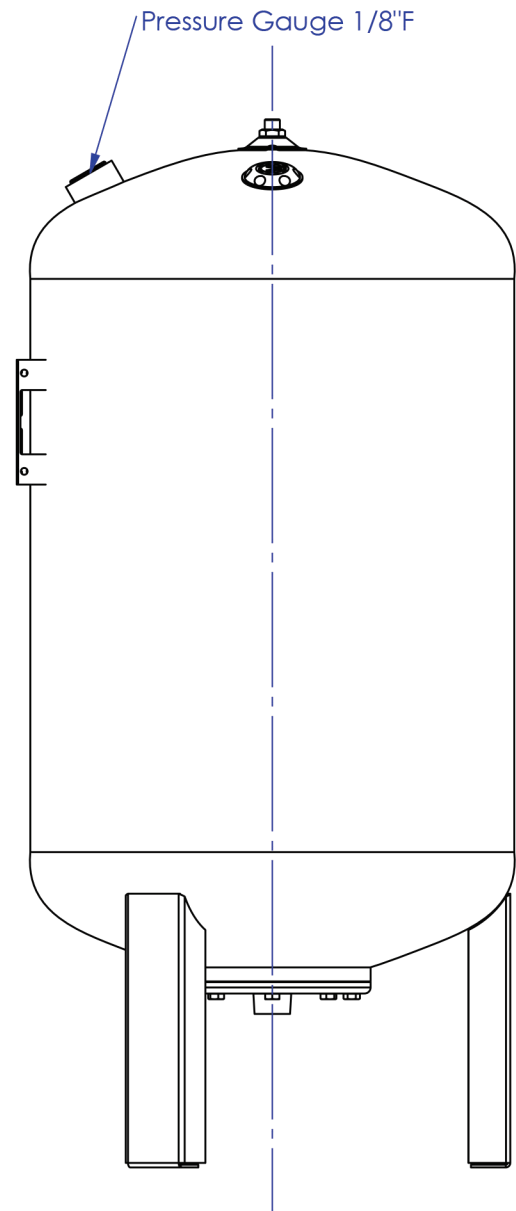
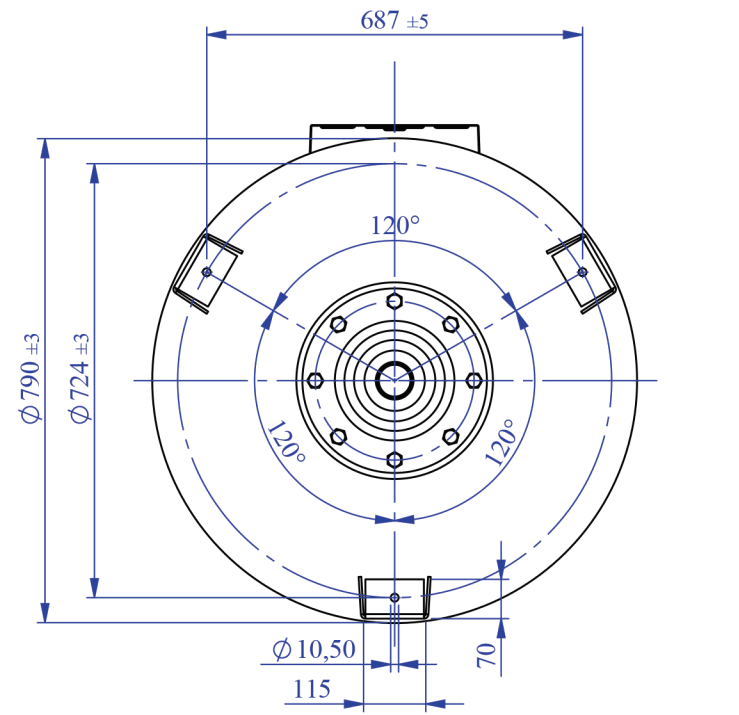
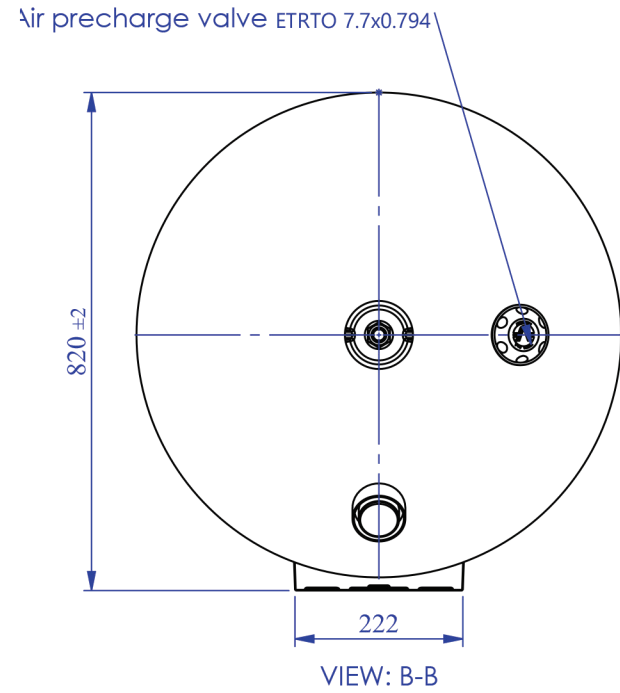
#### Caratteristiche tecniche - technical features

Volume Volume		300 L
raccordo connector		1" 1/2 GAS (ISO 228)
temperatura esercizio working temperature	TS	-10 +99 °C
pressione max. Max pressure	PS	8 bar
pressione prova test pressure	PT	12 bar
precarica precharged pressure		2 bar
Fluido Fluid		Aria+acqua Air+water
Modulo: Module:		B1+D
Categoria PED PED Category:		III

Energy Expert by Idroexpert

Via dell'Industria 15 - 48015 Montaletto di Cervia (RA)

Tel. 0544 964311 - Fax 0544 267811 - info@divisionenergy.com - www.divisionenergy.com



**LINEA SOLLEVAMENTO  
INOXENERGY LS CE**



**VASI DI ESPANSIONE IN ACCIAIO INOX  
STAINLESS STEEL WATER TANKS**

Modello/Model: 0228190

**Caratteristiche tecniche - technical features**

Volume Volume		500 L
raccordo connector		1" 1/2 GAS (ISO 228)
temperatura esercizio working temperature	TS	-10 +99 °C
pressione max. Max pressure	PS	8 bar
pressione prova test pressure	PT	12 bar
precarica precharged pressure		2 bar
Fluido Fluid		Aria+acqua Air+water
Modulo: Module:		B+D
Categoria PED PED Category:		IV

Energy Expert by Idroexpert

Via dell'Industria 15 - 48015 Montaletto di Cervia (RA)

Tel. 0544 964311 - Fax 0544 267811 - info@divisionenergy.com - www.divisionenergy.com

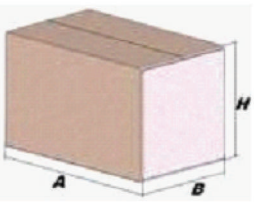
VASI DI ESPANSIONE IN ACCIAIO INOX  
STAINLESS STEEL WATER TANKS

Modello/Model: 0228185




Caratteristiche tecniche - technical features

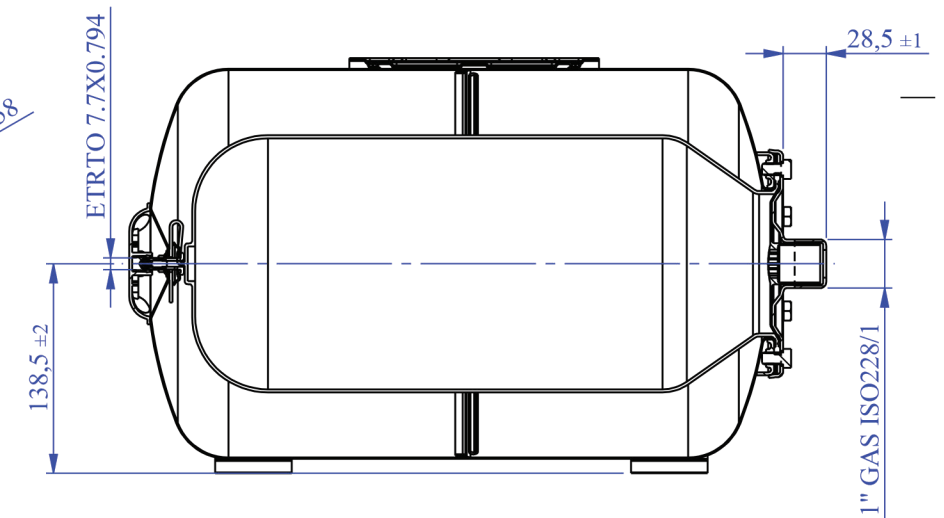
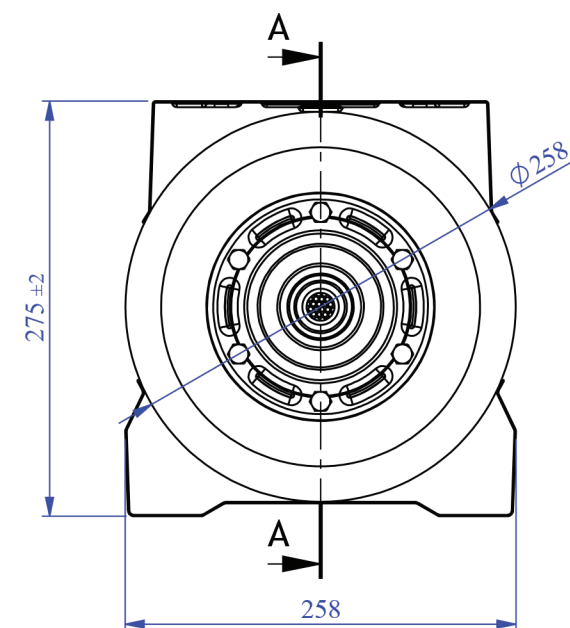
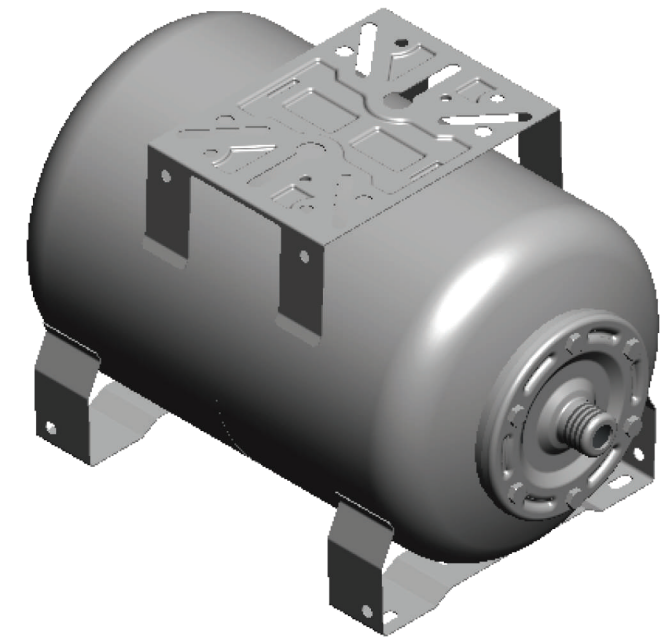
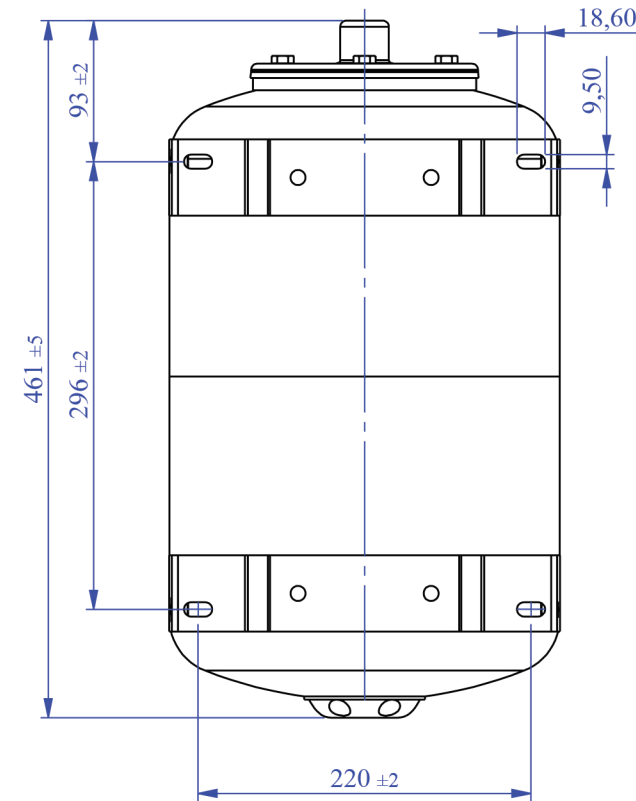
Volume Volume		20 L
raccordo connector		1" GAS (ISO 228/1)
temperatura esercizio working temperature	TS	-10 +99 °C
pressione max. Max pressure	PS	8 bar
pressione prova test pressure	PT	12 bar
precarica precharged pressure		2 bar (range 0,5-3,5 bar)
Fluido Fluid		Aria+acqua Air+water
Modulo: Module:		D1
Categoria PED PED Category:		II

Imballo - packaging

	A	B	H	
dimensioni (mm) dimensions (mm)	515	275	278	
volume (m <sup>3</sup> ) volume (m <sup>3</sup> )	0,04			
peso (kg) weight (kg)	0,1			
q.ta per cartone q.ty for box	1			
quantità per paletta Q,y for std. pallet	56			

Parti di ricambio - Spare parts

	codice item	materiale material	potabilità potable	trattamento treatment	immagine image
Membrana Membrane	0076795	GOMMA PER ACQUA USO ALIMENTARE/ RUBBER FOR POTABLE WATER	X		
Controflangia Coverflange	SPCFL191 S43000 00	ACCIAIO AISI304 / STAINLESS STEEL AISI304	X		
Valvola precarica Precharge valve	ACVALH27PR000 000	OTTONE / BRASS			



SEZIONE A-A

VASI DI ESPANSIONE IN ACCIAIO INOX  
STAINLESS STEEL WATER TANKS

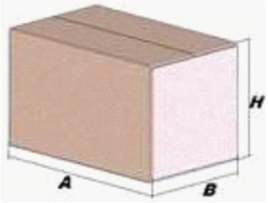
Modello/Model: 0228186

Caratteristiche tecniche - technical features




Volume Volume		50 L
raccordo connector		1" GAS (ISO 228/1)
temperatura esercizio working temperature	TS	-10 +99 °C
pressione max. Max pressure	PS	8 bar
pressione prova test pressure	PT	12 bar
precarica precharged pressure		2 bar (range 0,5-3,5 bar)
Fluido Fluid		Aria+acqua Air+water
Modulo: Module:		D1
Categoria PED PED Category:		II

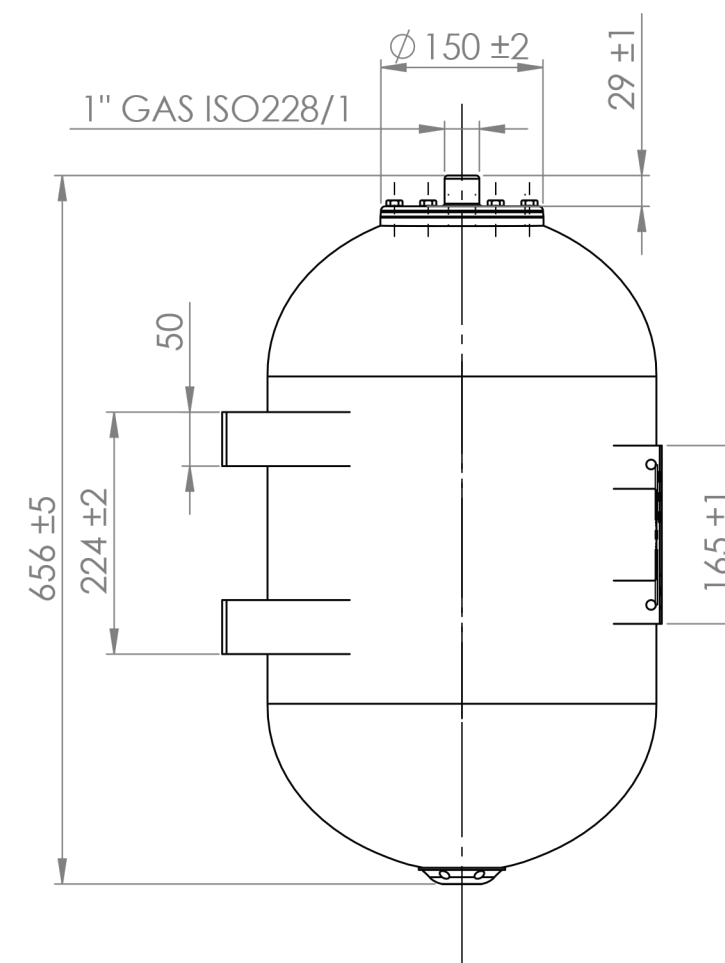
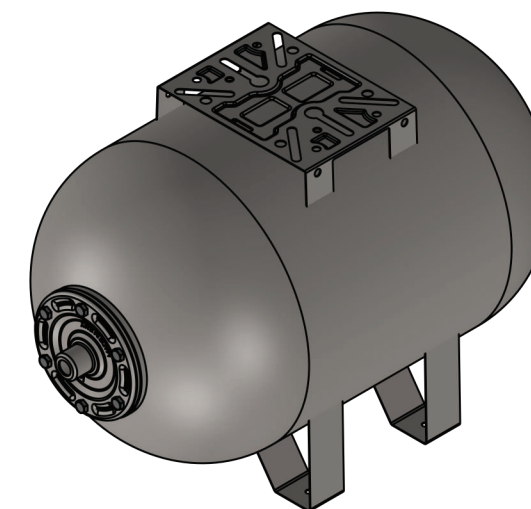
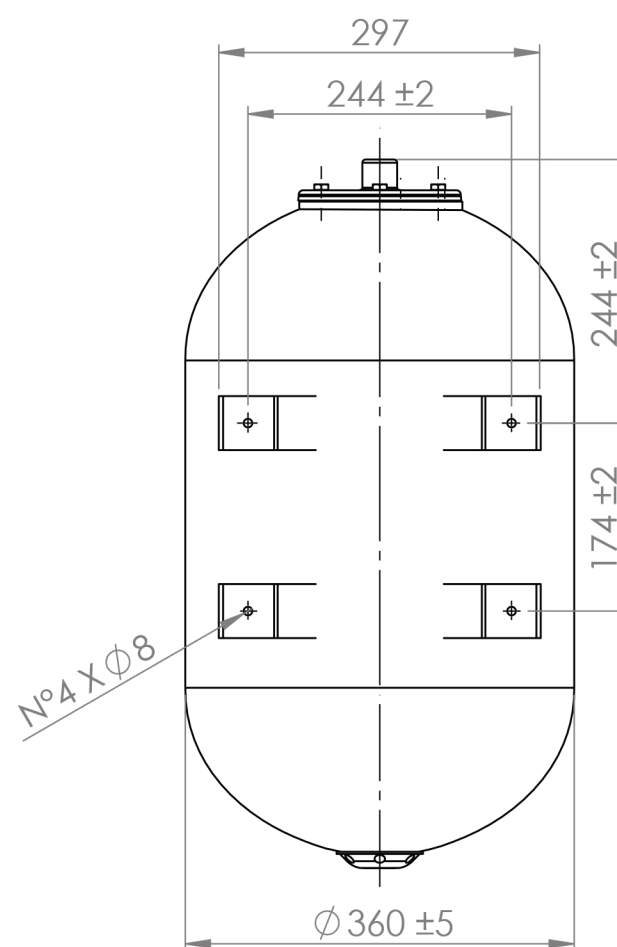
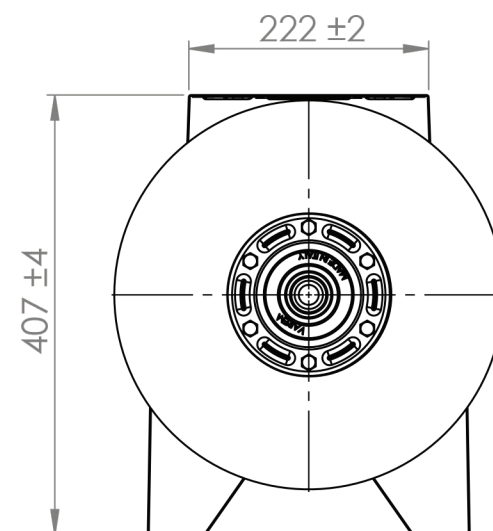
Imballo - packaging

	A	B	H
dimensioni (mm) dimensions (mm)	660	370	410
volume (m <sup>3</sup> ) volume (m <sup>3</sup> )	0,10		
peso (kg) weight (kg)	11,0		
q.ta per cartone q.ty for box	1		



Parti di ricambio - Spare parts

	codice item	materiale material	potabilità potable	trattamento treatment	immagine image
Membrana Membrane	0517866	GOMMA PER ACQUA USO ALIMENTARE / RUBBER FOR POTABLE WATER	X		
Controflangia Coverflange	SPCFL191S43000 00	ACCIAIO INOX AISI 304 / STAINLESS STEEL AISI 304	X	-	
Valvola precarica Precharge valve	ACVALJOVLO00 0000	OTTONE / BRASS			



VASI DI ESPANSIONE IN ACCIAIO INOX  
STAINLESS STEEL WATER TANKS

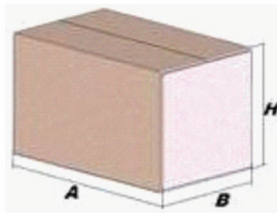
Modello/Model:

0228187




Caratteristiche tecniche - technical features

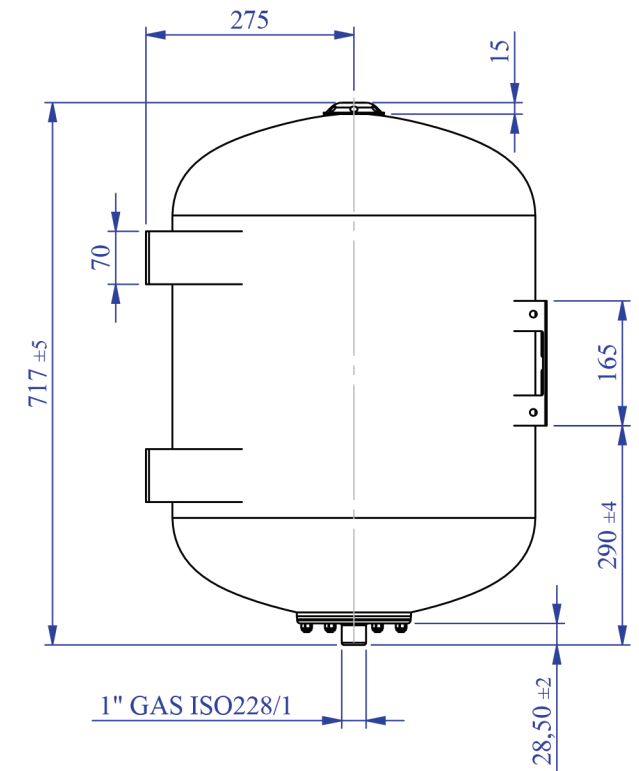
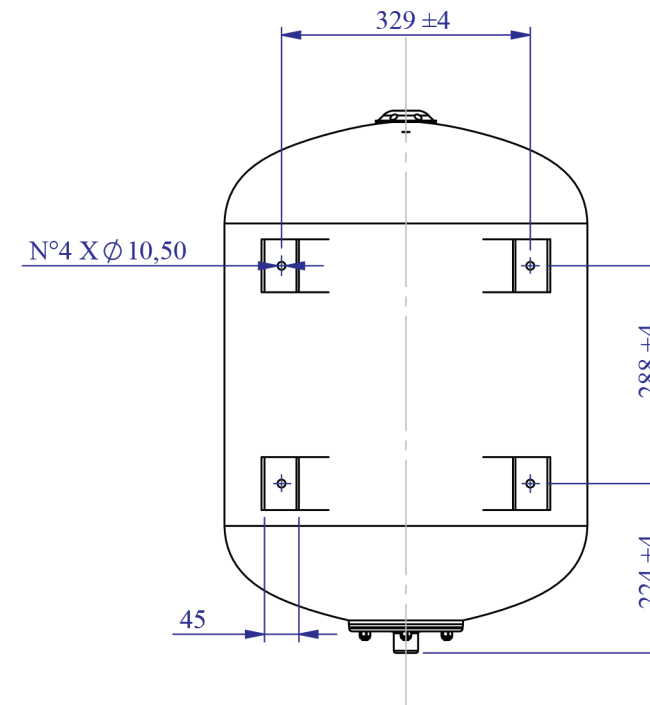
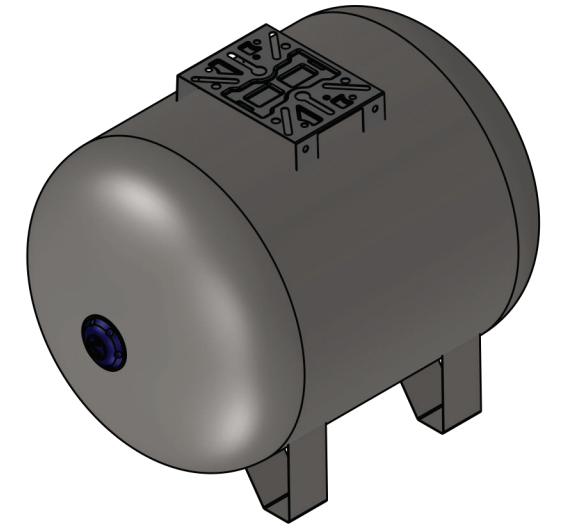
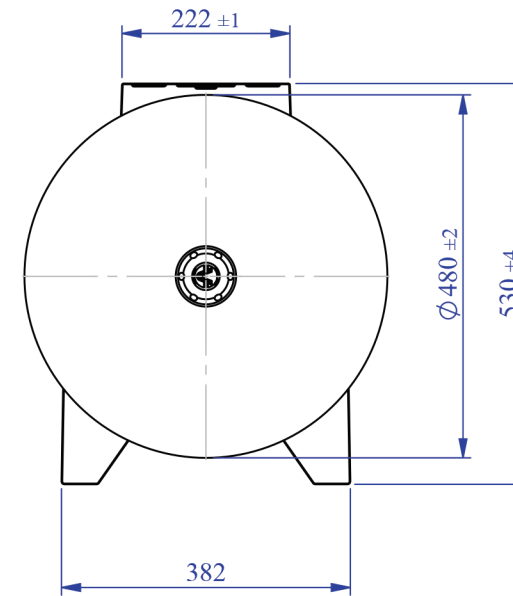
Volume Volume		100 L
raccordo connector		1" GAS (ISO 228/1)
temperatura esercizio working temperature	TS	-10 +99 °C
pressione max. Max pressure	PS	8 bar
pressione prova test pressure	PT	12 bar
precarica precharged pressure		2 bar (range 0,5-3,5 bar)
Fluido Fluid		Aria+acqua Air+water
Modulo: Module:		D1
Categoria PED PED Category:		II

Imballo - packaging

	A	B	H	
dimensioni (mm) dimensions (mm)	730	490	540	
volume (m <sup>3</sup> ) volume (m <sup>3</sup> )	0,19			
peso (kg) weight (kg)	19,4			
q.ta per cartone q.ty for box	1			

Parti di ricambio - Spare parts

	codice item	materiale material	potabilità potable	trattamento treatment	immagine image
Membrana Membrane	0517867	GOMMA PER ACQUA USO ALIMENTARE / RUBBER FOR POTABLE WATER	X		
Controflangia Coverflange	SPCFL191S43000 00	STAINLESS STEEL AISI 304	X		
Valvola precarica Precharge valve	ACVALJOVSH000 000	OTTONE / BRASS			



Energy Expert by Idroexpert

Via dell'Industria 15 - 48015 Montaletto di Cervia (RA)

Tel. 0544 964311 - Fax 0544 267811 - info@divisionenergy.com - www.divisionenergy.com