

## VASI DI ESPANSIONE EXTRAENERGY LC CE

PER IMPIANTI DI ACQUA CALDA SANITARIA  
FOR HOT SANITARY SYSTEMS

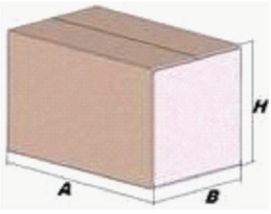
Modello/Model:

0257045

### Caratteristiche tecniche - technical features

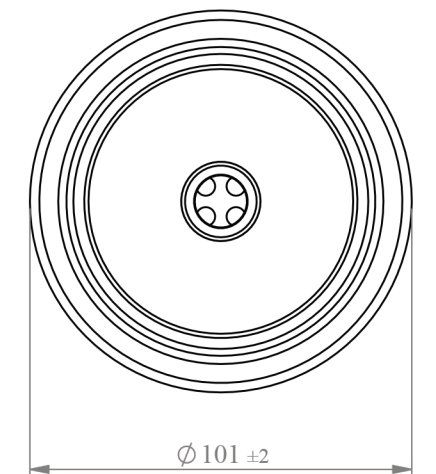
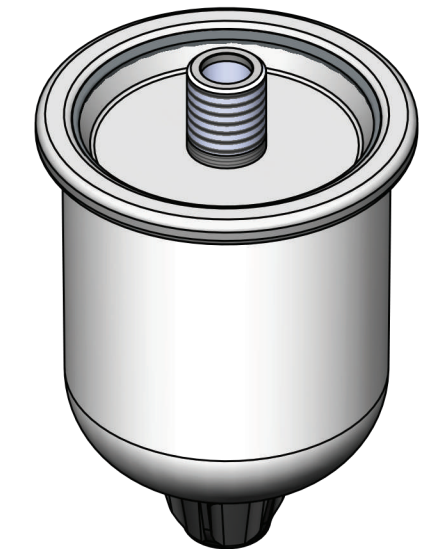
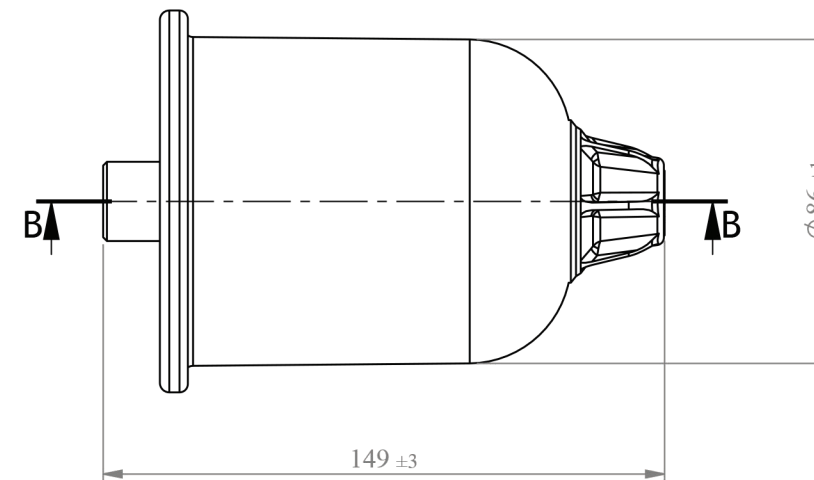
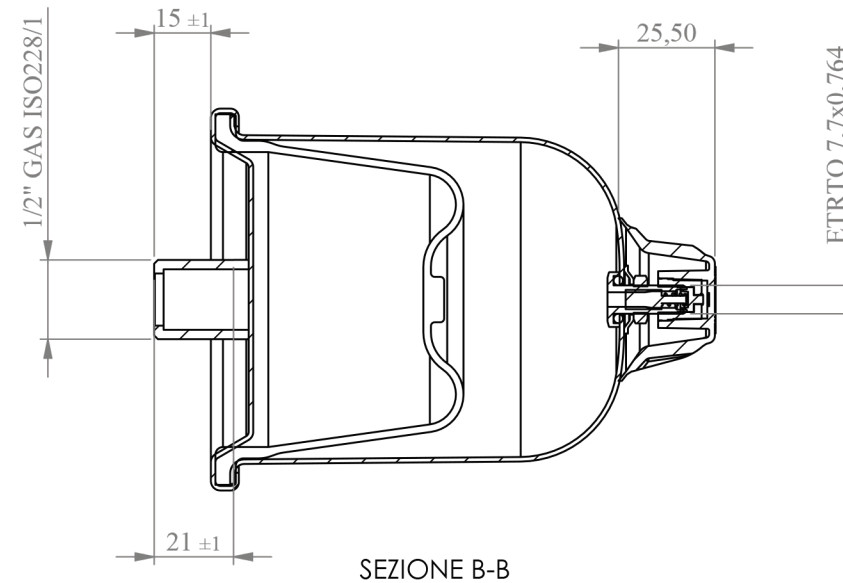
Volume Volume		0,6 L
raccordo connector		1/2" GAS (ISO 228)
temperatura esercizio working temperature	TS	-10 +99 °C
pressione max. Max pressure	PS	10 bar
pressione prova test pressure	PT	15 bar
precarica precharged pressure		3,5 bar
Fluido Fluid		Aria+acqua Air+water
Modulo: Module:		I
Categoria PED PED Category:		Art.4.3

### Imballo - packaging

	A	B	H	
dimensioni (mm) dimensions (mm)	214	214	165	
volume (m <sup>3</sup> ) volume (m <sup>3</sup> )	0,01			
peso (kg) weight (kg)	0,56			
q.ta per cartone q.ty for box	4			
quantità per paletta Q,y for std. pallet	600			

### Materiali - materials

materiale membrana membrane rubber	GOMMA PER ACQUA USO ALIMENTARE / RUBBER FOR POTABLE WATER
materiale controflangia Coverflange material	ACCIAIO INOX AISI304 / STAINLESS STEEL AISI304



Energy Expert by Idroexpert

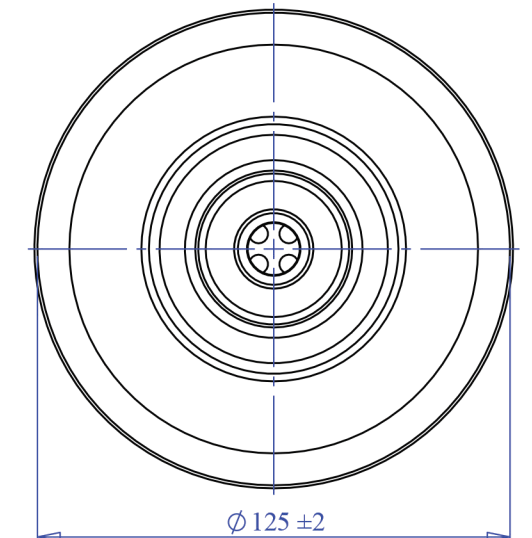
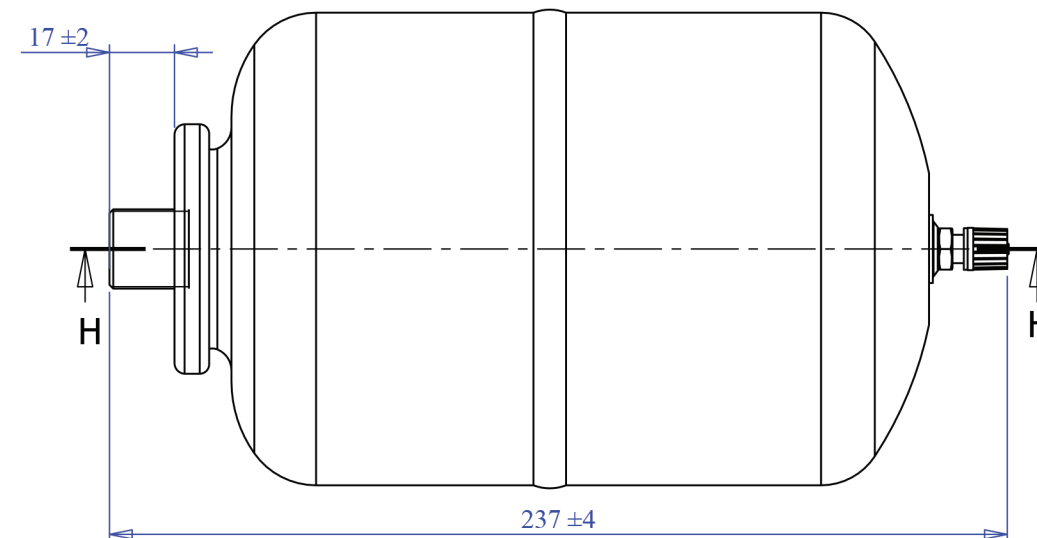
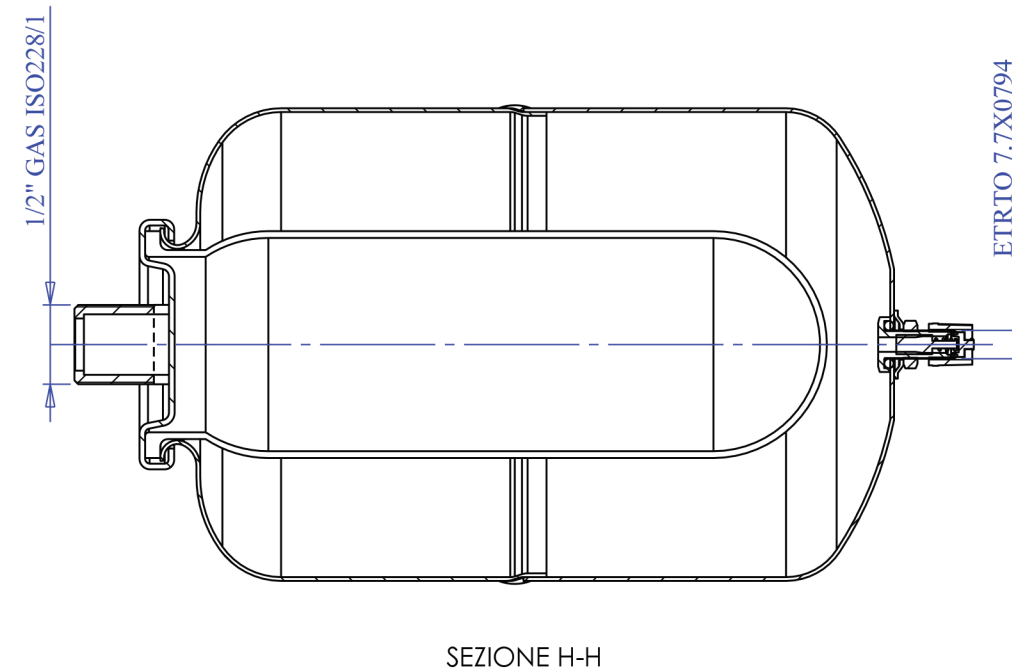
Via dell'Industria 15 - 48015 Montaletto di Cervia (RA)

Tel. 0544 964311 - Fax 0544 267811 - info@divisionenergy.com - www.divisionenergy.com

## VASI DI ESPANSIONE EXTRAENERGY LC CE

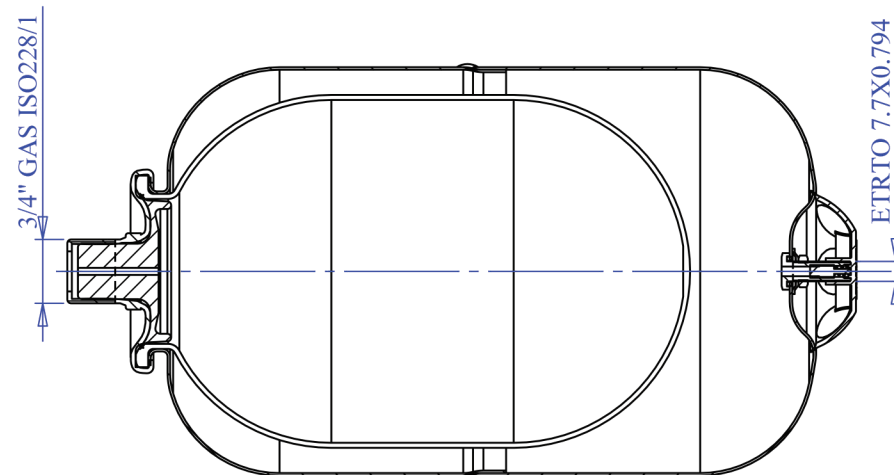
### VASI DI ESPANSIONE MULTIFUNZIONE MULTIFUNCTION EXPANSION TANKS

Modello/Model:	<b>0257945</b>		
<b>Caratteristiche tecniche - technical features</b>			
Volume Volume			2 L
raccordo connector			1/2" GAS (ISO 228/1)
temperatura esercizio working temperature	TS		-10 +99 °C
pressione max. Max pressure	PS		10 bar
pressione prova test pressure	PT		15 bar
precarica precharged pressure			3,5 bar (range 0,5-3,5 bar)
Fluido Fluid			Aria+acqua Air+water
Modulo: Module:			/
Categoria PED PED category:			/
<b>Imballo - packaging</b>			
	<b>A</b>	<b>B</b>	<b>H</b>
dimensioni (mm) dimensions (mm)	245	133	133
volume (m <sup>3</sup> ) volume (m <sup>3</sup> )	0,004		
peso (kg) weight (kg)	0,97		
q.ta per cartone q.ty for box	1		
quantità per paletta Q,y for std. pallet	135		
<b>Materiali - materials</b>			
materiale membrana membrane rubber	BUTILE / BUTYL		
materiale controflangia Coverflange material	ACCIAIO INOX AISI304 / STAINLESS STEEL AISI304		

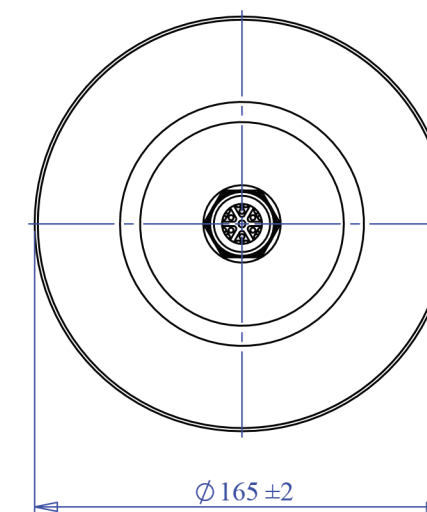
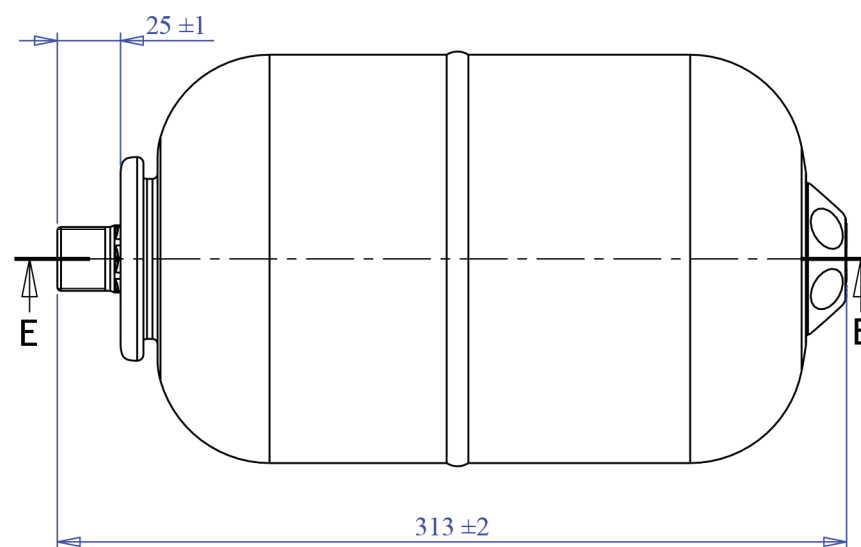


## VASI DI ESPANSIONE EXTRAENERGY LC CE

PER IMPIANTI DI ACQUA CALDA SANITARIA FOR HOT SANITARY SYSTEMS			
Modello/Model:	0257946		
<b>Caratteristiche tecniche - technical features</b>			
Volume Volume		5 L	
raccordo connector		3/4" GAS (ISO 228/1)	
temperatura esercizio working temperature	TS	-10 +99 °C	
pressione max. Max pressure	PS	8 bar	
pressione prova test pressure	PT	12 bar	
precarica precharged pressure		3,5 bar (range 0,5-3,5 bar)	
Fluido Fluid		Aria+acqua Air+water	
Ente notificato per certificazione PED Notified Body number:		/	
Modulo: Module:		/	
N° certificato N° certificate:		/	
<b>Imballo - packaging</b>			
	<b>A</b>	<b>B</b>	<b>H</b>
dimensioni (mm) dimensions (mm)	350	180	180
volume (m <sup>3</sup> ) volume (m <sup>3</sup> )	0,01		
peso (kg) weight (kg)	1,8		
q.ta per cartone q.ty for box	1		
quantità per paletta Q,y for std. pallet	210		
<b>Materiali - materials</b>			
materiale membrana membrane rubber	BUTILE / BUTYL		
materiale controflangia Coverflange material	ACCIAIO AISI304 / STAINLESS STEEL AISI304		



SEZIONE E-E



# VASI DI ESPANSIONE EXTRAENERGY LC CE



PER IMPIANTI DI ACQUA CALDA SANITARIA  
FOR HOT SANITARY SYSTEMS

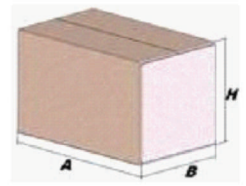
Modello/Model: **0257947**

### Caratteristiche tecniche - technical features

Volume Volume		8 L
raccordo connector		3/4" GAS (ISO 228/1)
temperatura esercizio working temperature	TS	-10 +99 °C
pressione max. Max pressure	PS	8 bar
pressione prova test pressure	PT	12 bar
precarica precharged pressure		3,5 bar (range 0,5-3,5 bar)
Fluido Fluid		Aria+acqua Air+water
Modulo: Module:		A
Categoria PED PED Category:		I

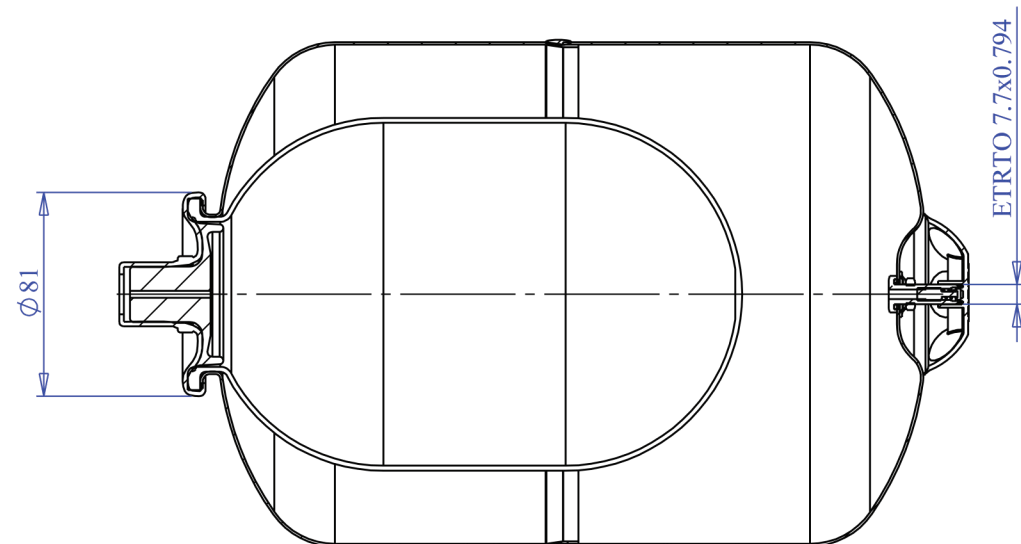
### Imballo - packaging

	A	B	H
dimensioni (mm) dimensions (mm)	220	220	343
volume (m <sup>3</sup> ) volume (m <sup>3</sup> )	0,02		
peso (kg) weight (kg)	2,3		
q.ta per cartone q.ty for box	1		
quantità per paletta Q.y for std. pallet	144		

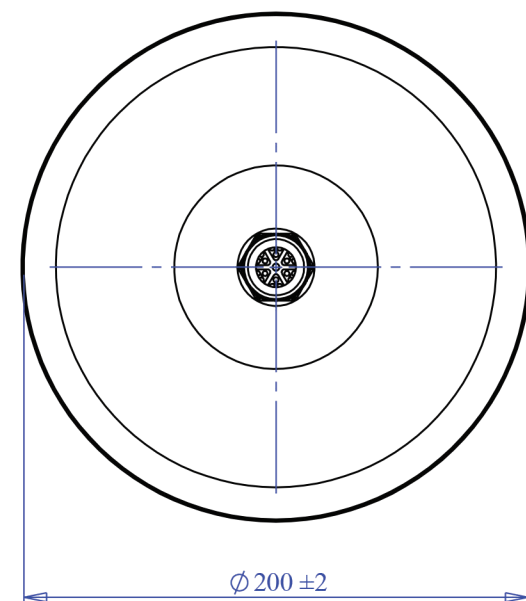
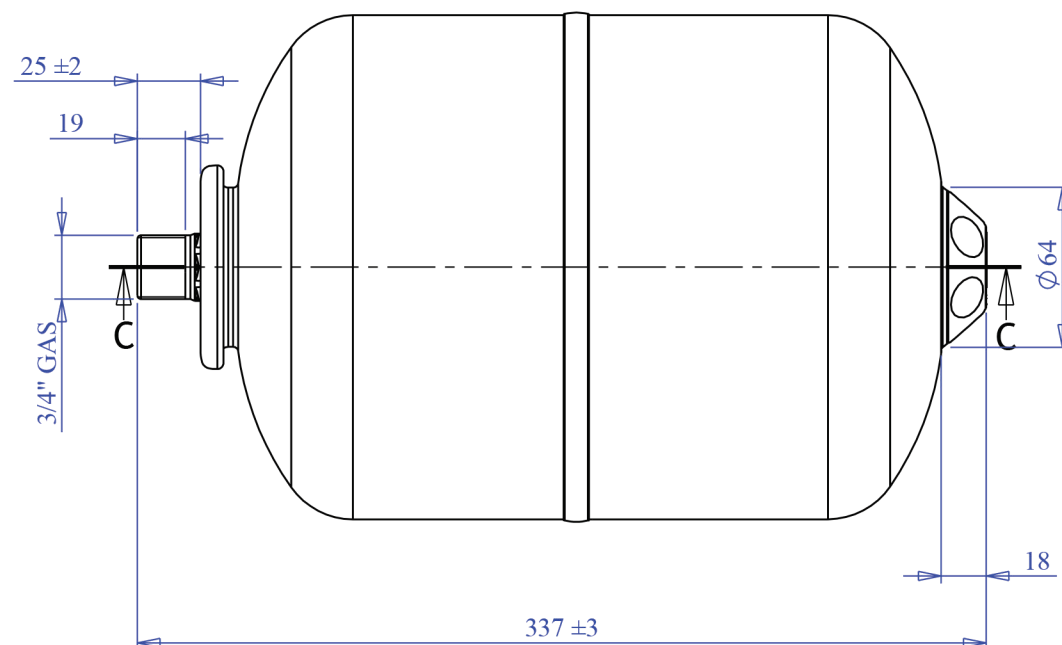


### Materiali - materials

materiale membrana membrane rubber	BUTILE / BUTYL
materiale controlangia Coverfalnge material	ACCIAIO AISI304 / STAINLESS STEEL AISI304



SEZIONE C-C



Energy Expert by Idroexpert

Via dell'Industria 15 - 48015 Montaletto di Cervia (RA)

Tel. 0544 964311 - Fax 0544 267811 - info@divisionenergy.com - www.divisionenergy.com

## VASI DI ESPANSIONE EXTRAENERGY LC CE



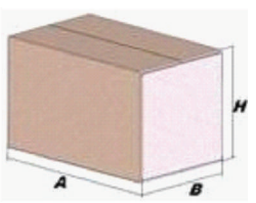
PER IMPIANTI DI ACQUA CALDA SANITARIA  
FOR HOT SANITARY SYSTEMS

Modello/Model: **0257948**

### Caratteristiche tecniche - technical features

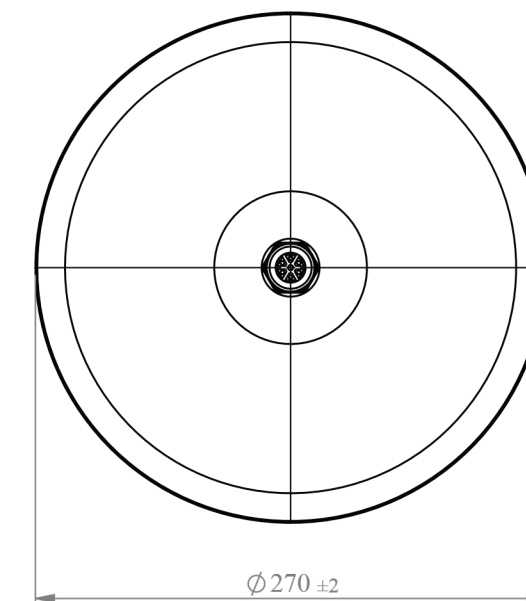
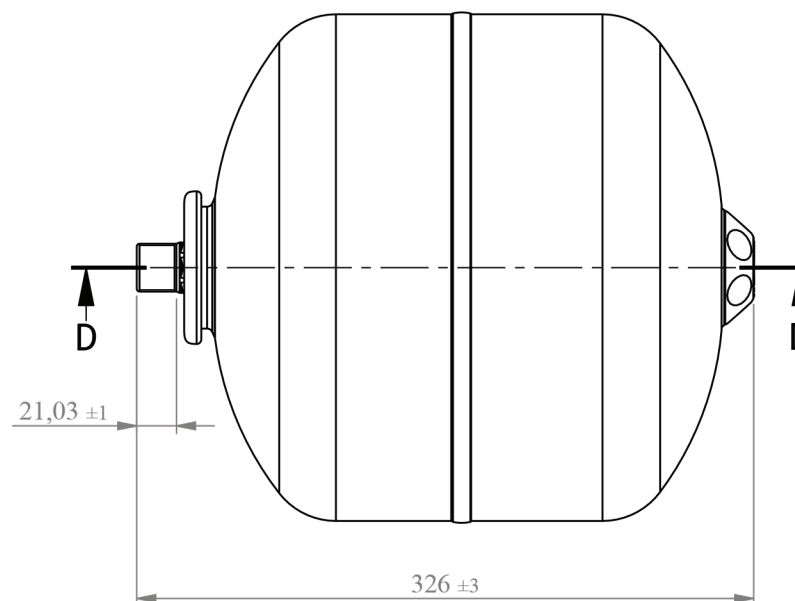
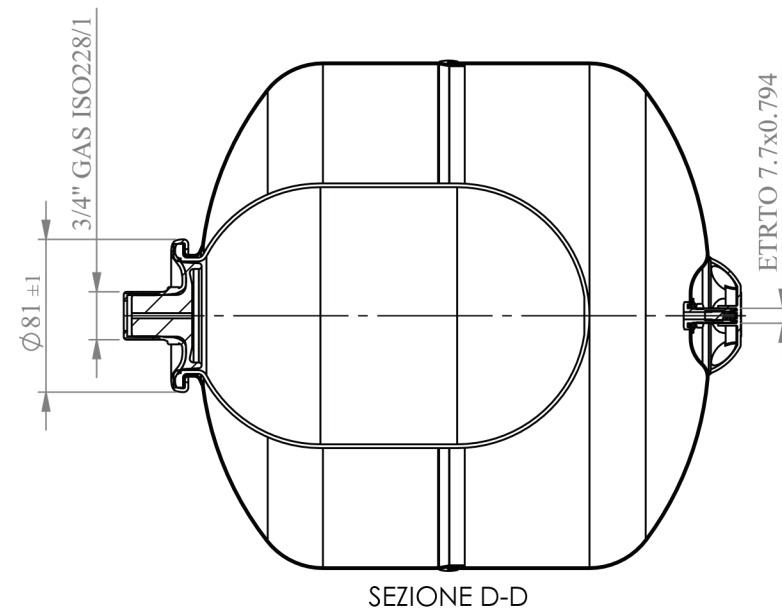
Volume Volume		12 L
raccordo connector		3/4" GAS (ISO 228/1)
temperatura esercizio working temperature	TS	-10 +99 °C
pressione max. Max pressure	PS	8 bar
pressione prova test pressure	PT	12 bar
precarica precharged pressure		3,5 bar (range 0,5-3,5 bar)
Fluido Fluid		Aria+acqua Air+water
Modulo: Module:		A
Categoria PED PED Category:		I

### Imballo - packaging

	A	B	H	
dimensioni (mm) dimensions (mm)	331	281	281	
volume (m <sup>3</sup> ) volume (m <sup>3</sup> )	0,03			
peso (kg) weight (kg)	3,2			
q.ta per cartone q.ty for box	1			
quantità per paletta Q,y for std. pallet	84			

### Materiali - materials

materiale membrana membrane rubber	BUTILE / BUTYL
materiale controflangia Coverflange material	ACCIAIO AISI304 / STAINLESS STEEL AISI304



Energy Expert by Idroexpert

Via dell'Industria 15 - 48015 Montaletto di Cervia (RA)

Tel. 0544 964311 - Fax 0544 267811 - info@divisionenergy.com - www.divisionenergy.com

## VASI DI ESPANSIONE EXTRAENERGY LC CE



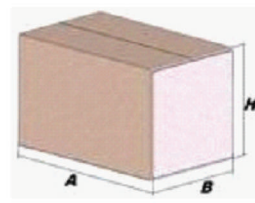
PER IMPIANTI DI ACQUA CALDA SANITARIA  
FOR HOT SANITARY SYSTEMS

Modello/Model: **0257949**

### Caratteristiche tecniche - technical features

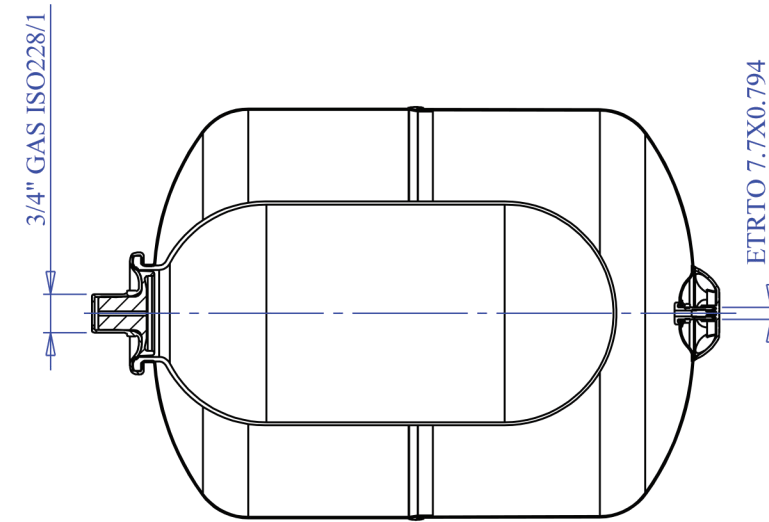
Volume Volume		18 L
raccordo connector		3/4" GAS (ISO 228/1)
temperatura esercizio working temperature	TS	-10 +99 °C
pressione max. Max pressure	PS	8 bar
pressione prova test pressure	PT	12 bar
precarica precharged pressure		3,5 bar (range 0,5-3,5 bar)
Fluido Fluid		Aria+acqua Air+water
Modulo: Module:		A
Categoria PED PED Category:		I

### Imballo - packaging

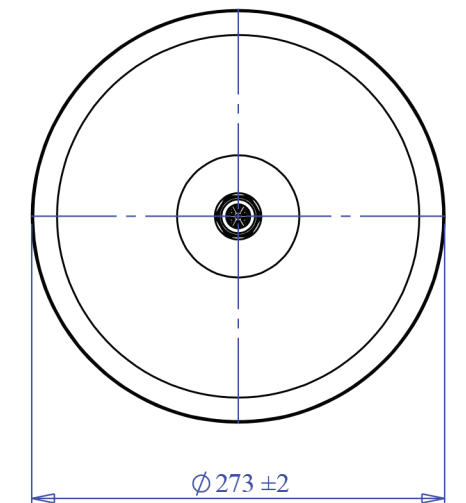
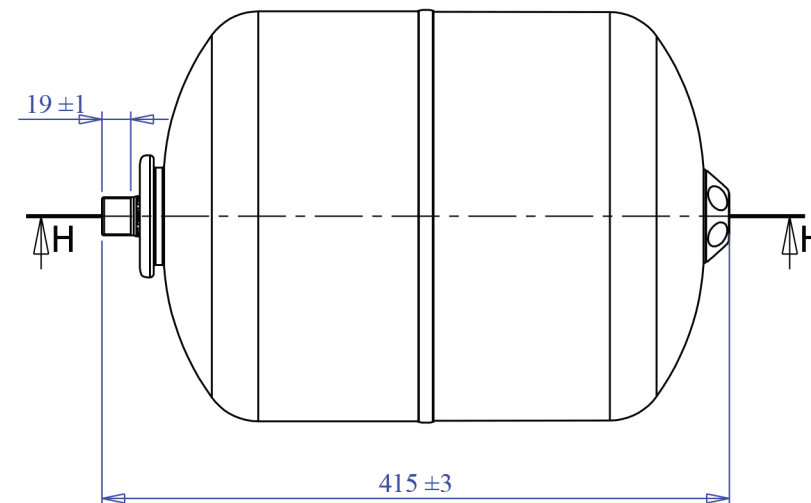
	A	B	H	
dimensioni (mm) dimensions (mm)	434	289	281	
volume (m <sup>3</sup> ) volume (m <sup>3</sup> )	0,04			
peso (kg) weight (kg)	4,0			
q.ta per cartone q.ty for box	1			
quantità per paletta Q,y for std. pallet	56			

### Materiali - materials

materiale membrana membrane rubber	BUTILE / BUTYL
materiale controflangia Coverflange material	ACCIAIO AISI304 / STAINLESS STEEL AISI304



SEZIONE H-H



Energy Expert by Idroexpert

Via dell'Industria 15 - 48015 Montaletto di Cervia (RA)

Tel. 0544 964311 - Fax 0544 267811 - info@divisionenergy.com - www.divisionenergy.com



## VASI DI ESPANSIONE EXTRAENERGY LC CE



PER IMPIANTI DI ACQUA CALDA SANITARIA  
FOR HOT SANITARY SYSTEMS

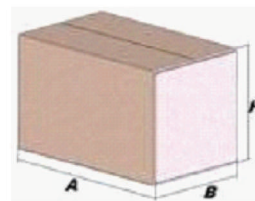
Modello/Model: **0257950**

### Caratteristiche tecniche - technical features

Volume Volume		25 L
raccordo connector		3/4" GAS (ISO 228/1)
temperatura esercizio working temperature	TS	-10 +99 °C
pressione max. Max pressure	PS	8 bar
pressione prova test pressure	PT	12 bar
precarica precharged pressure		3,5 bar (range 0,5-3,5 bar)
Fluido Fluid		Aria+acqua Air+water
Modulo: Module:		A
Categoria PED PED Category:		I

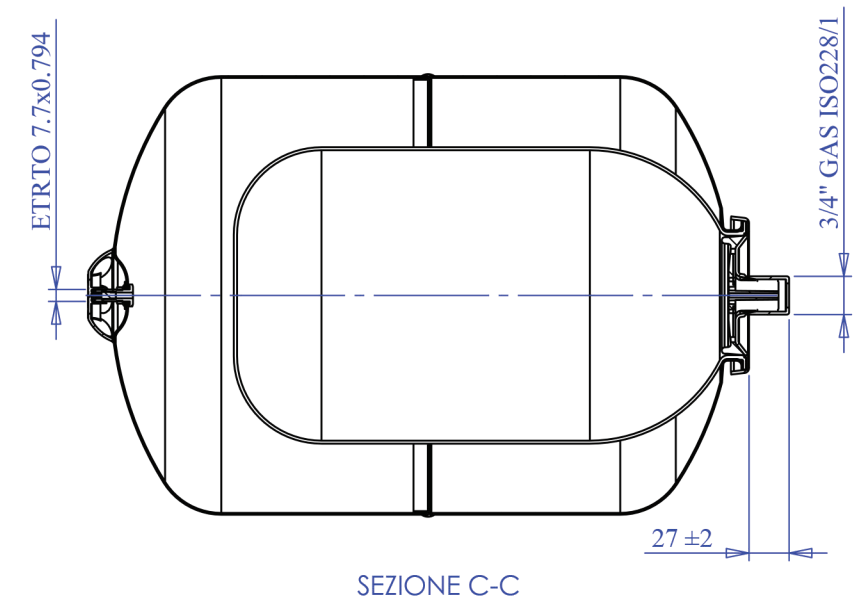
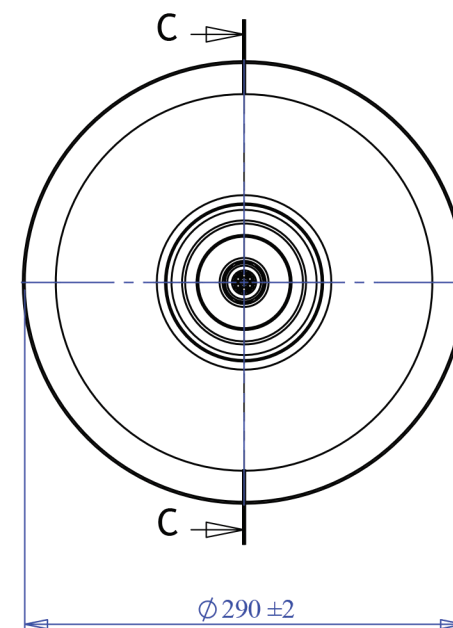
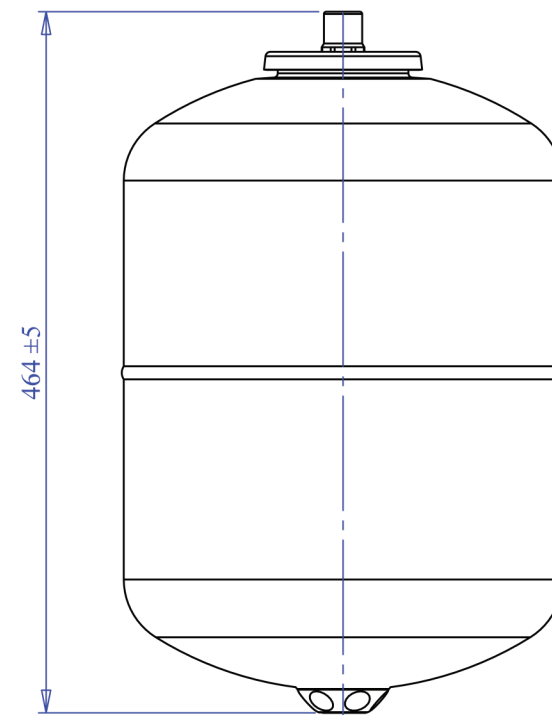
### Imballo - packaging

	A	B	H
dimensioni (mm) dimensions (mm)	470	305	303
volume (m <sup>3</sup> ) volume (m <sup>3</sup> )	0,04		
peso (kg) weight (kg)	5,6		
q.ta per cartone q.ty for box	1		
quantità per paletta Q,y for std. pallet	63		



### materiale / material

Membrana Membrane	GOMMA PER ACQUA USO ALIMENTARE / RUBBER FOR POTABLE WATER
Controflangia Coverflange	ACCIAIO INOX AISI304 / STAINLESS STEEL AISI304



Energy Expert by Idroexpert

Via dell'Industria 15 - 48015 Montaletto di Cervia (RA)

Tel. 0544 964311 - Fax 0544 267811 - info@divisionenergy.com - www.divisionenergy.com

## SOLLEVAMENTO ACQUA - ACQUA CALDA SANITARIA WATER BOOSTER SYSTEMS - DOMESTIC HOT WATER

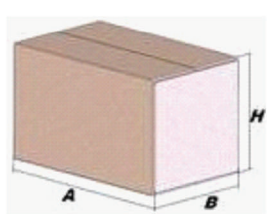
Modello/Model: **0257951**

### Caratteristiche tecniche - technical features




Volume <i>Volume</i>		<b>24 L</b>
raccordo <i>connector</i>		<b>3/4" GAS (ISO 228/1)</b>
temperatura esercizio <i>working temperature</i>	<b>TS</b>	<b>-10 +99 °C</b>
pressione max. <i>Max pressure</i>	<b>PS</b>	<b>10bar</b>
pressione prova <i>test pressure</i>	<b>PT</b>	<b>15 bar</b>
precarica <i>precharged pressure</i>		<b>3,5 bar (range 0,5-3,5 bar)</b>
Fluido <i>Fluid</i>		<b>Aria+acqua Air+water</b>
Modulo: <i>Module:</i>		<b>D1</b>
Categoria PED PED Category:		<b>II</b>

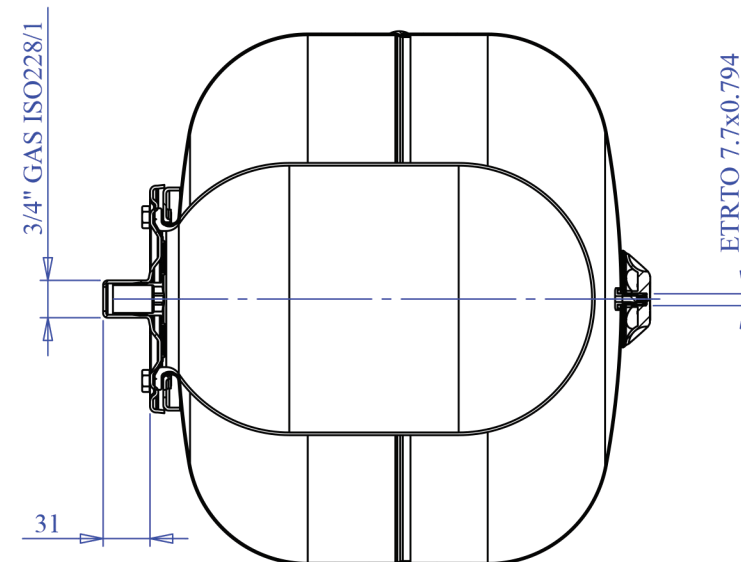
### Imballo - packaging

	A	B	H
dimensioni (mm) <i>dimensions (mm)</i>	380	370	370
volume (m <sup>3</sup> ) <i>volume (m<sup>3</sup>)</i>	0,05		
peso (kg) <i>weight (kg)</i>	5,3		
q.ta per cartone q.ty for box	1		
quantità per palette Q,y for std. pallet	25		

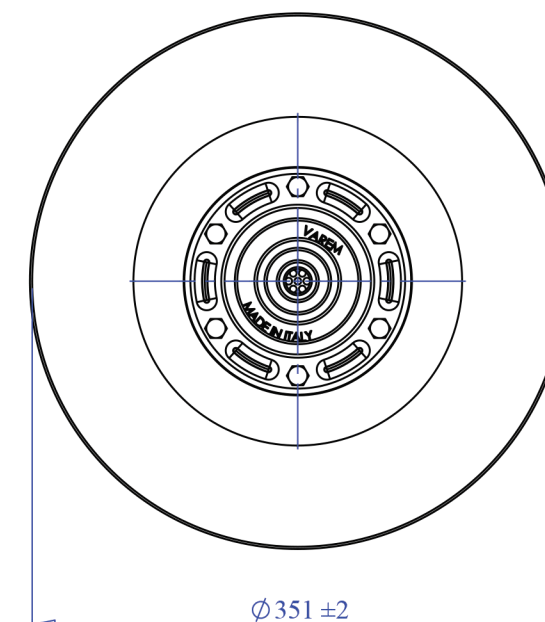
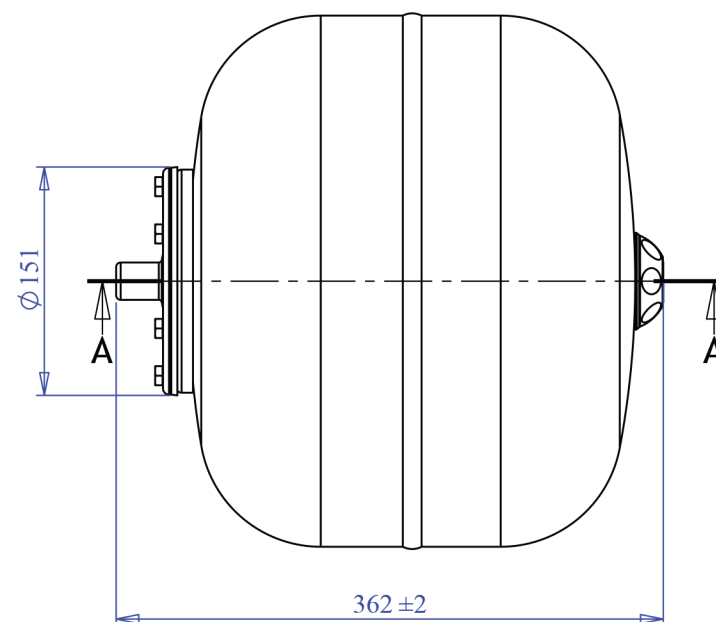


### Parti di ricambio - Spare parts

	codice <i>item</i>	materiale <i>material</i>	potabilità <i>potable</i>	trattamento <i>treatment</i>	immagine <i>image</i>
Membrana Membrane	<b>MB019S2P000000 00</b>	<b>GOMMA PER ACQUA USO ALIMENTARE / RUBBER FOR POTABLE WATER</b>	x		
Controflangia Coverflange	<b>SPCFL191S42000 00</b>	<b>ACCIAIO INOX / STAINLESS STEEL</b>	x		
Valvola precarica Precharge valve	<b>ACVALH21PR000 000</b>	<b>OTTONE / BRASS</b>			



SEZIONE A-A



Energy Expert by Idroexpert

Via dell'Industria 15 - 48015 Montaletto di Cervia (RA)

Tel. 0544 964311 - Fax 0544 267811 - info@divisionenergy.com - www.divisionenergy.com



# VASI DI ESPANSIONE EXTRAENERGY LC CE



PER IMPIANTI DI ACQUA CALDA SANITARIA  
FOR HOT SANITARY SYSTEMS

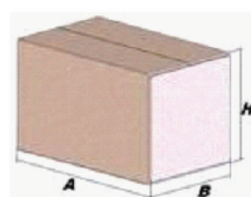
Modello/Model: **0257952**

### Caratteristiche tecniche - technical features

Volume Volume		40 L
raccordo connector		3/4" GAS (ISO 228/1)
temperatura esercizio working temperature	TS	-10 +99 °C
pressione max. Max pressure	PS	8 bar
pressione prova test pressure	PT	12 bar
precarica precharged pressure		3,5 bar (range 0,5-3,5 bar)
Fluido Fluid		Aria+acqua Air+water
Modulo: Module:		D1
Categoria PED PED Category:		II

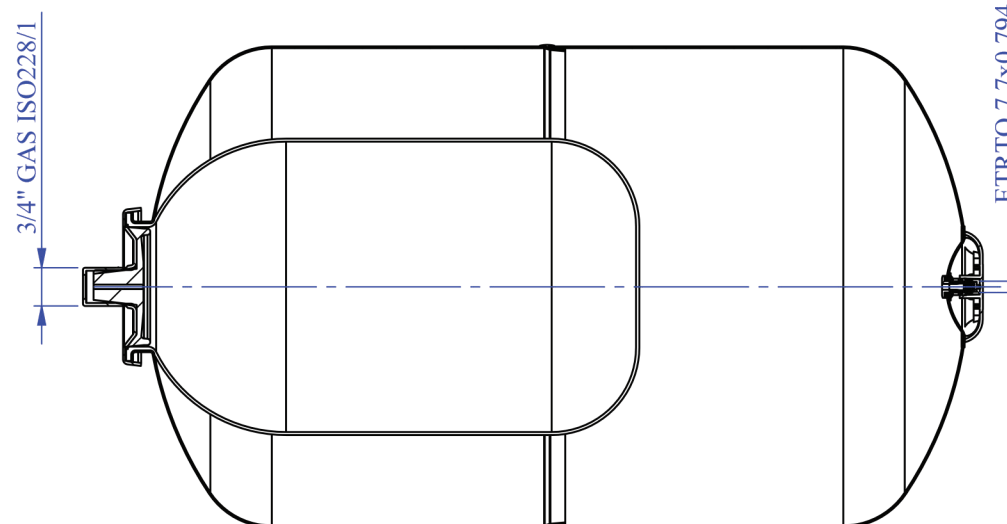
### Imballo - packaging

	A	B	H
dimensioni (mm) dimensions (mm)	600	330	330
volume (m <sup>3</sup> ) volume (m <sup>3</sup> )	0,06		
peso (kg) weight (kg)	5,7		
q.ta per cartone q.ty for box	1		
quantità per paletta Q,y for std. pallet	36		

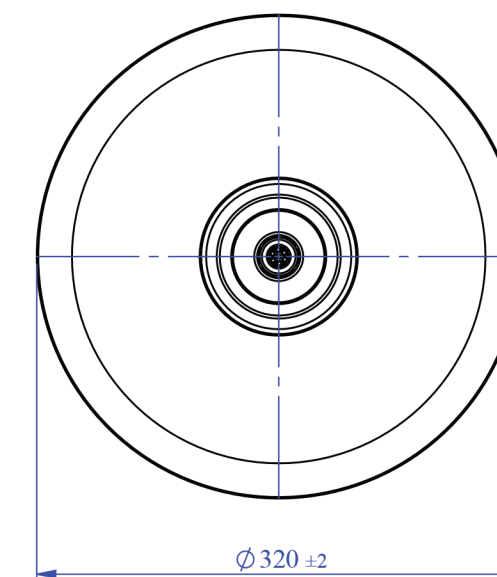
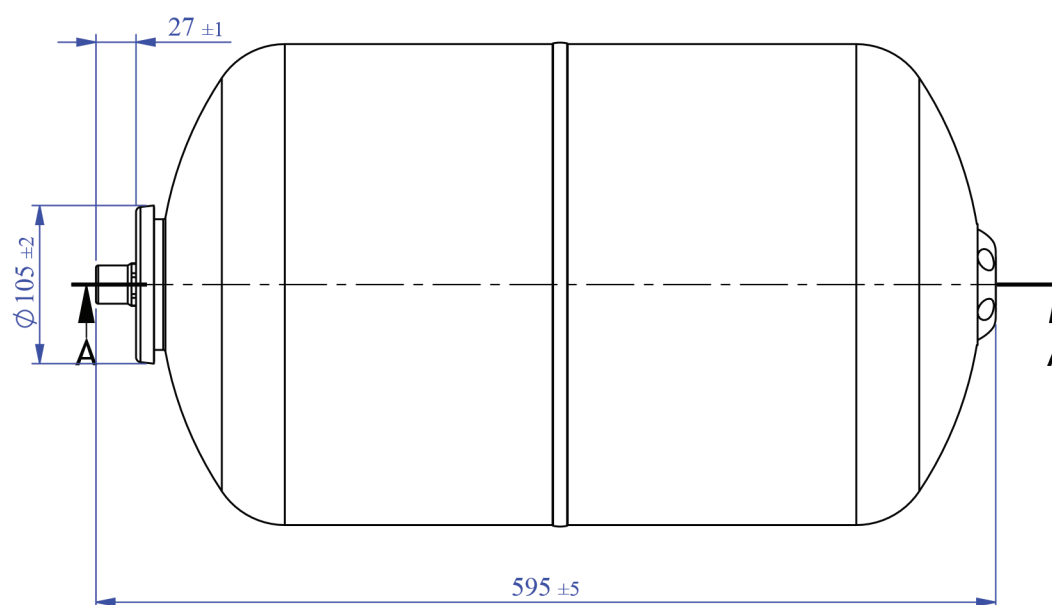
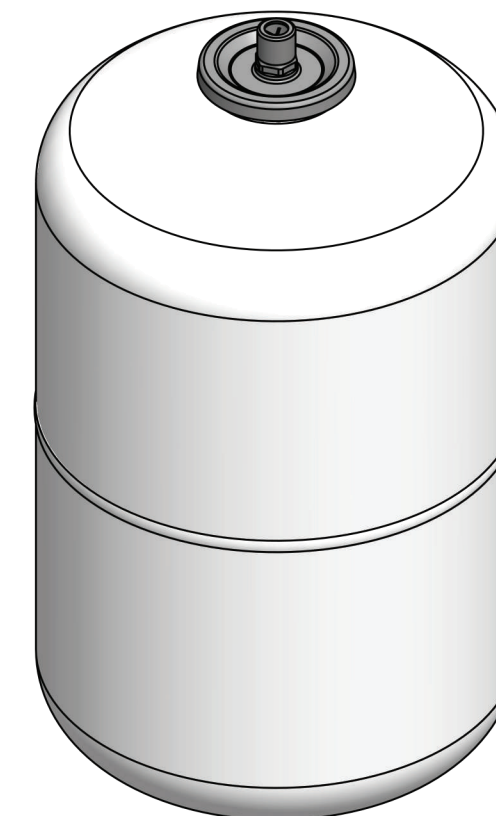


### Materiali - materials

materiale membrana membrane rubber	BUTILE / BUTYL
materiale controflangia Coverflange material	ACCIAIO AISI304 / STAINLESS STEEL AISI304



SEZIONE A-A



Energy Expert by Idroexpert

Via dell'Industria 15 - 48015 Montaletto di Cervia (RA)

Tel. 0544 964311 - Fax 0544 267811 - info@divisionenergy.com - www.divisionenergy.com